

Manual del usuario de la Herramienta de configuración de las acciones de Nautilus

Copyright © 2010 Pierre Wieser

Copyright © 2010 Jorge González (jorgegonz@svn.gnome.org)

Se otorga permiso para copiar, distribuir y/o modificar este documento bajo los términos de la Licencia de Documentación Libre de GNU, Versión 1.1 o cualquier otra versión posterior publicada por la Free Software Foundation; sin Secciones Invariantes ni Textos de Cubierta Delantera ni Textos de Cubierta Trasera. Puede encontrar una copia de la licencia GFDL en este [enlace](#) o en el archivo COPYING-DOCS distribuido con este manual.

Este manual es parte de una colección de manuales de GNOME distribuido bajo la GFDL. Si quiere distribuir este manual por separado de la colección, puede hacerlo añadiendo una copia de la licencia al manual, tal como se describe en la sección 6 de la licencia.

Muchos de los nombres utilizados por las empresas para distinguir sus productos y servicios se consideran marcas comerciales. Cuando estos nombres aparezcan en la documentación de GNOME, y siempre que se haya informado a los miembros del Proyecto de documentación de GNOME de dichas marcas comerciales, los nombres aparecerán en mayúsculas o con las iniciales en mayúsculas.

ESTE DOCUMENTO Y LAS VERSIONES MODIFICADAS DEL MISMO SE PROPORCIONAN SEGÚN LAS CONDICIONES ESTABLECIDAS EN LA LICENCIA DE DOCUMENTACIÓN LIBRE DE GNU (GFDL) Y TENIENDO EN CUENTA QUE:

1. EL DOCUMENTO SE PROPORCIONA "TAL CUAL", SIN GARANTÍA DE NINGÚN TIPO, NI EXPLÍCITA NI IMPLÍCITA INCLUYENDO, SIN LIMITACIÓN, GARANTÍA DE QUE EL DOCUMENTO O VERSIÓN MODIFICADA DE ÉSTE CAREZCA DE DEFECTOS COMERCIALES, SEA ADECUADO A UN FIN CONCRETO O INCUMPLA ALGUNA NORMATIVA. TODO EL RIESGO RELATIVO A LA CALIDAD, PRECISIÓN Y UTILIDAD DEL DOCUMENTO O SU VERSIÓN MODIFICADA RECAE EN USTED. SI CUALQUIER DOCUMENTO O VERSIÓN MODIFICADA DE AQUÉL RESULTARA DEFECTUOSO EN CUALQUIER ASPECTO, USTED (Y NO EL REDACTOR INICIAL, AUTOR O CONTRIBUYENTE) ASUMIRÁ LOS COSTES DE TODA REPARACIÓN, MANTENIMIENTO O CORRECCIÓN NECESARIOS. ESTA RENUNCIA DE GARANTÍA ES UNA PARTE ESENCIAL DE ESTA LICENCIA. NO SE AUTORIZA EL USO DE NINGÚN DOCUMENTO NI VERSIÓN MODIFICADA DE ÉSTE POR EL PRESENTE, SALVO DENTRO DEL CUMPLIMIENTO DE LA RENUNCIA;Y
2. EN NINGUNA CIRCUNSTANCIA NI SEGÚN NINGÚN ARGUMENTO LEGAL, SEA POR MOTIVOS CULPOSOS (INCLUIDA LA NEGLIGENCIA), CONTRACTUALES O DE OTRO TIPO, NI EL AUTOR, NI EL REDACTOR INICIAL, NI CUALQUIER COLABORADOR, NI CUALQUIER DISTRIBUIDOR DEL DOCUMENTO O VERSIÓN MODIFICADA DEL MISMO, NI CUALQUIER PROVEEDOR DE CUALQUIERA DE DICHAS PARTES, SERÁN RESPONSABLES, ANTE NINGÚN TERCERO, DE NINGÚN DAÑO O PERJUICIO DIRECTO, INDIRECTO, ESPECIAL, INCIDENTAL O CONSIGUIENTE DE NINGÚN TIPO, INCLUIDOS, SIN LIMITACIÓN, LOS DAÑOS POR PÉRDIDA DE FONDO DE COMERCIO, INTERRUPCIÓN DEL TRABAJO, FALLO O MAL FUNCIONAMIENTO INFORMÁTICO, NI CUALQUIER OTRO DAÑO O PÉRDIDA DERIVADOS DEL USO DEL DOCUMENTO Y LAS VERSIONES MODIFICADAS DEL MISMO, O RELACIONADO CON ELLO, INCLUSO SI SE HABÍA COMUNICADO A AQUELLA PARTE LA POSIBILIDAD DE TALES DAÑOS.

COLABORADORES

	<i>TÍTULO :</i> Manual del usuario de la Herramienta de configuración de las acciones de Nautilus	
<i>ACCIÓN</i>	<i>NOMBRE</i>	<i>FECHA</i>
ESCRITO POR	Pierre Wieser	1 de enero de 2011

HISTORIAL DE REVISIONES

NÚMERO	FECHA	MODIFICACIONES	NOMBRE
Nautilus-Actions Configuration Tool User's Manual v 3.0	Agosto de 2010	Pierre Wieser pwieser@trychlos.org	

Índice

1. Introducción	1
2. Inicio	1
2.1. Starting Nautilus-Actions Configuration Tool	1
2.2. The first run	1
2.3. Creating your first action	3
3. Using Nautilus-Actions Configuration Tool	7
3.1. Defining the conditions	7
3.1.1. Basename-based conditions	7
3.1.2. Mimetype-based conditions	8
3.1.3. Folder-based conditions	10
3.1.4. Scheme-base-conditions	11
3.1.5. Capability-based conditions	13
3.1.6. Selection count condition	15
3.1.7. Desktop selection	17
3.1.8. Executable found condition	18
3.1.9. D-Bus registration condition	18
3.1.10. Customized condition	19
3.1.11. Running process condition	19
3.2. Locating the action	20
3.2.1. Targeting the selection context menu	20
3.2.2. Targeting the location context menu	20
3.2.3. Targeting the toolbar	21
3.2.4. Notas	21
3.3. What the action should it execute ?	22
3.3.1. Available parameters	22
3.3.2. Where the action should it be executed ?	23
3.3.3. How the action should it be executed ?	23
3.3.3.1. Modo de ejecución	24
3.3.3.2. Notificación de inicio	25
3.3.3.3. Window class	25
3.3.3.4. Owner of the execution	26
3.3.3.5. Multiple execution	26
3.4. Using profiles to extend your action	27
3.4.1. Ordering the profiles inside an action	28
3.5. Organizing actions in menus	28

3.6. Sorting the items list	29
3.6.1. Alphabetically sorting your actions and menus	29
3.6.2. Manually organizing your actions and menus	29
3.7. Editando	29
3.7.1. Cut/Delete	29
3.7.2. Multiple selection	30
3.8. Saving your modifications	30
3.9. Exporting your actions	30
3.10. Acciones de importación	30
3.11. Setting your own preferences	30
3.11.1. Preferencias de ejecución	31
3.11.2. User interface preferences	32
3.11.3. Preferencias de importación	33
3.11.4. Preferencias de exportación	34
3.11.5. Preferencias de esquemas	35
3.11.6. I/O providers preferences	36
4. Miscellaneous informations	36
5. Errores conocidos y limitaciones	36
5.1. Errores conocidos	36
5.2. Known limitations	37
6. About Nautilus-Actions Configuration Tool	37
A. GNU Free Documentation License	37

Índice de figuras

1.	Nautilus-Actions Configuration Tool Start Up Window	2
2.	Default properties of a new action	4
3.	Command page	5
4.	Your first action in the Nautilus context menu	6
5.	The result of the execution of your first action	6
6.	Basename-based conditions	7
7.	Mimetype-based conditions	9
8.	Folder-based conditions	10
9.	Scheme-based conditions	12
10.	Selecting a scheme among predefined defaults	13
11.	Capability-based conditions	14
12.	Managed capabilities	15
13.	Environment-based conditions	16
14.	Selection count condition frame	16
15.	Desktop selection frame	17
16.	Execution environment frame	18
17.	Target configuration	20
18.	List of available parameters	22
19.	Working directory frame	23
20.	Configuration of the execution modes	24
21.	Configuration of the execution mode	24
22.	Configuration of the startup modes	25
23.	Configuration of the owner of the run	26
24.	Sort buttons in the main window	29
25.	Preferencias de ejecución	31
26.	Preferencias de la IU	32
27.	Preferencias de importación	33
28.	Preferencias de exportación	34
29.	Preferencias de esquemas	35
30.	I/O providers preferences	36

Índice de cuadros

1.	Characterization of the parameters vs. multiple execution	27
----	---	----

Resumen

Nautilus-Actions is a Nautilus extension whose principal function is to allow the user to add arbitrary actions to the file manager context menus. These actions may be organized in menus and submenus, exported and shared with other desktop environments.

This manual describes the Nautilus-Actions Configuration Tool user interface, and explains how you may configure your menus and actions, making them be displayed and applied depending on specific conditions.

1. Introducción

Nautilus-Actions is a Nautilus extension whose principal function is to allow the user to add arbitrary actions to the file manager context menus. These actions may be organized in menus and submenus, exported and shared with other desktop environments.

The Nautilus-Actions Configuration Tool application is the user interface which lets you precisely configure how, where and when your actions should appear in Nautilus context menus, and how they will be executed.

Nautilus-Actions Configuration Tool provides the following features:

- Define and configure actions from scratch.
- Organize actions into menus, submenus and so on.
- Import and export actions and menus from and to outside world.

nota

Nautilus-Actions also comes with additional features such as:

- A Nautilus plugin which exports in real time to D-Bus the currently selected files.
- A command-line program which is able to run any action.
Associated with the D-Bus interface, this program lets the user run any action from a keyboard shortcut, applying this action to the item(s) currently selected in the file manager.
- A command-line program which is able to create a new action.

All these features are more thoroughly described in the global Nautilus-Actions documentation.

2. Inicio

2.1. Starting Nautilus-Actions Configuration Tool

You can start Nautilus-Actions Configuration Tool in the following ways:

Menú Sistema Choose Preferences → Look and Feel → Nautilus-Actions Configuration Tool.

Línea de comandos To start Nautilus-Actions Configuration Tool from a command line, type the following command:

```
nautilus-actions-config-tool
```

then press **Return**.

sugerencia

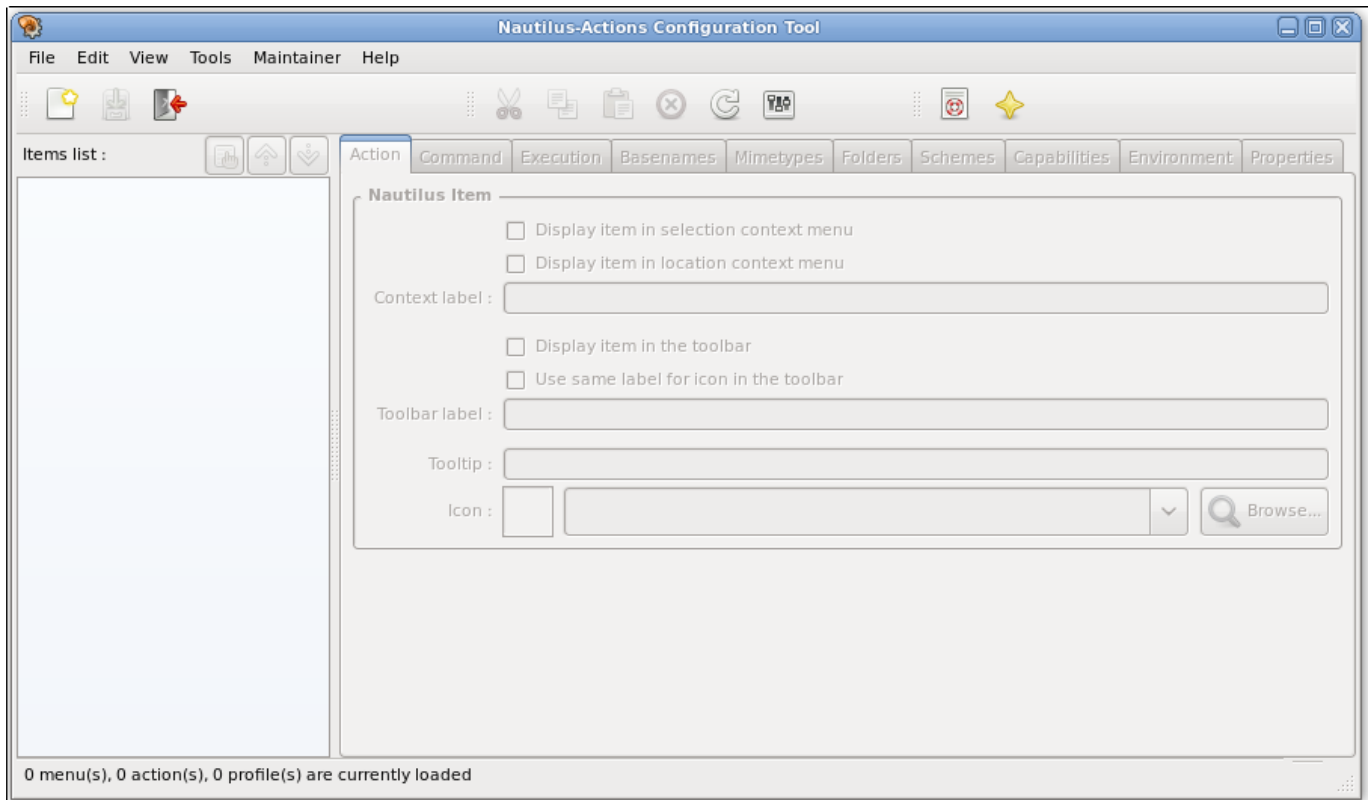
To view available command line options, type:

```
nautilus-actions-config-tool --help-all
```

then press **Return**.

2.2. The first run

When you start Nautilus-Actions Configuration Tool, the following window is displayed.



The empty Nautilus-Actions Configuration Tool main window

Figura 1: Nautilus-Actions Configuration Tool Start Up Window

The Nautilus-Actions Configuration Tool main window contains the following elements:

Barra de menú. The menus on the menubar contain all of the commands you need to use in Nautilus-Actions Configuration Tool.

Shortcuts are available for some commands:

Ctrl-N Create a new action.

Ctrl-S Save modified actions and menus.

Ctrl-Q Quit the application.

Ctrl-X Cut the current selection, keeping it in the clipboard.

Ctrl-C Copy the current selection to the clipboard.

Ctrl-V Insert the content of the clipboard before the current item.

Mayús-Ctrl-V Insert the content of the clipboard as subitem(s) of the current item.

Eliminar Delete the current selection.

F5 Reload the actions and menus.

F1 Display the help.

Barra de herramientas. Several toolbars may be displayed below the menubar, depending of your choices in the View → Toolbars submenu.

Items list. The list on the left of the main window contains all items, whether they are actions or menus, currently available for edition in Nautilus-Actions Configuration Tool.

Items may be sorted in ascending or descending alphabetical order, or not sorted at all, being directly organized and managed by the user.

Invalid items are displayed in red color.

Modified items are displayed in italic characters.

Sort buttons Three buttons allow you to toggle between sort modes.

Properties tabs. The right part of the main window displays all is needed to define how, when and where actions and menus should be displayed.

Action/Menu Define in which Nautilus menus the item should appear, and how it will be displayed.

Comando Specify which command to execute, and which parameters pass to it.

Ejecución Specify how the command should be executed.

Basenames Define the basename filters the Nautilus selection must satisfy in order the action or menu be candidate for display.

Tipos MIME Define the mimetype filters the Nautilus selection must satisfy in order the action or menu be candidate for display.

Carpetas Define the folder filters the Nautilus selection must satisfy in order the action or menu be candidate for display.

Schemes Define the scheme filters the Nautilus selection must satisfy in order the action or menu be candidate for display.


Prestaciones Define the capability filters the Nautilus selection must satisfy in order the action or menu be candidate for display.

Entorno Define some environment conditions the Nautilus selection must satisfy in order the action or menu be candidate for display.

Propiedades Display item properties.

Barra de estado. The statusbar displays some status informations about the currently selected row in the items list.

When no relevant information is to be displayed, the statusbar displays the count of loaded menus, actions and profiles.

The « read-only » icon  is displayed in the right of the statusbar when appropriate.

2.3. Creating your first action

In this example, we are going to create an action which displays some pretty informations about the current selection.

Checking for prerequisites This action will require Zenity.

Zenity is a program which will allow you to create a graphical user interface from a command-line.

You should check that this program is installed on your system, by example by typing the following command in a terminal:

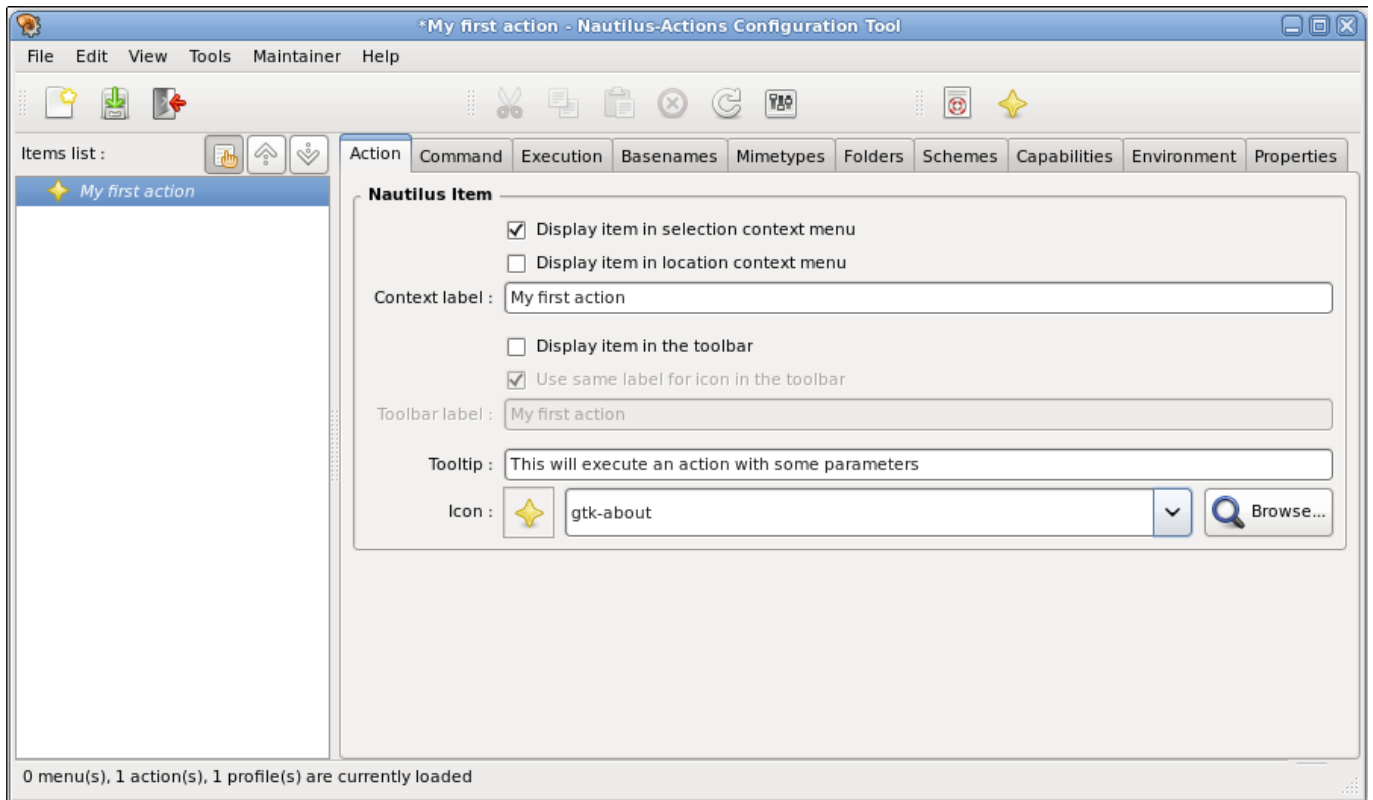
zenity

then press **Return**.

Creating the action To create a new action, choose File → New action (**Ctrl-N**).

A new action is inserted in the items list, and its properties are displayed in the tabs on the right pane.

The label of the currently edited action (this one) is added to the application name in the title bar.



Default properties of a new action

Figura 2: Default properties of a new action

In the Items list, the new action is displayed in italic characters.

Italics are used as a reminder that the item has not yet been saved.

As another reminder that there is some pending modifications, an asterisk (« * ») comes to prefix the application name in the title bar.

Qualifying your new action It merely consists of choosing how your action will be displayed in the file manager context menu.


- Enter **My first action** in the Context label entry box.

The Context label entry box contains the label of the action as you want it to be displayed in the file manager context menu.

The label is a mandatory property of your action. If it happens to be empty, then your action will be considered as invalid by Nautilus-Actions: it will be displayed in red in Items list and will never be candidate to be displayed in the file manager context menus.

- Enter **This will execute an action with some parameters** in the Tooltip entry box.

The Tooltip entry box contains the text you want to be displayed as a short help to your action.

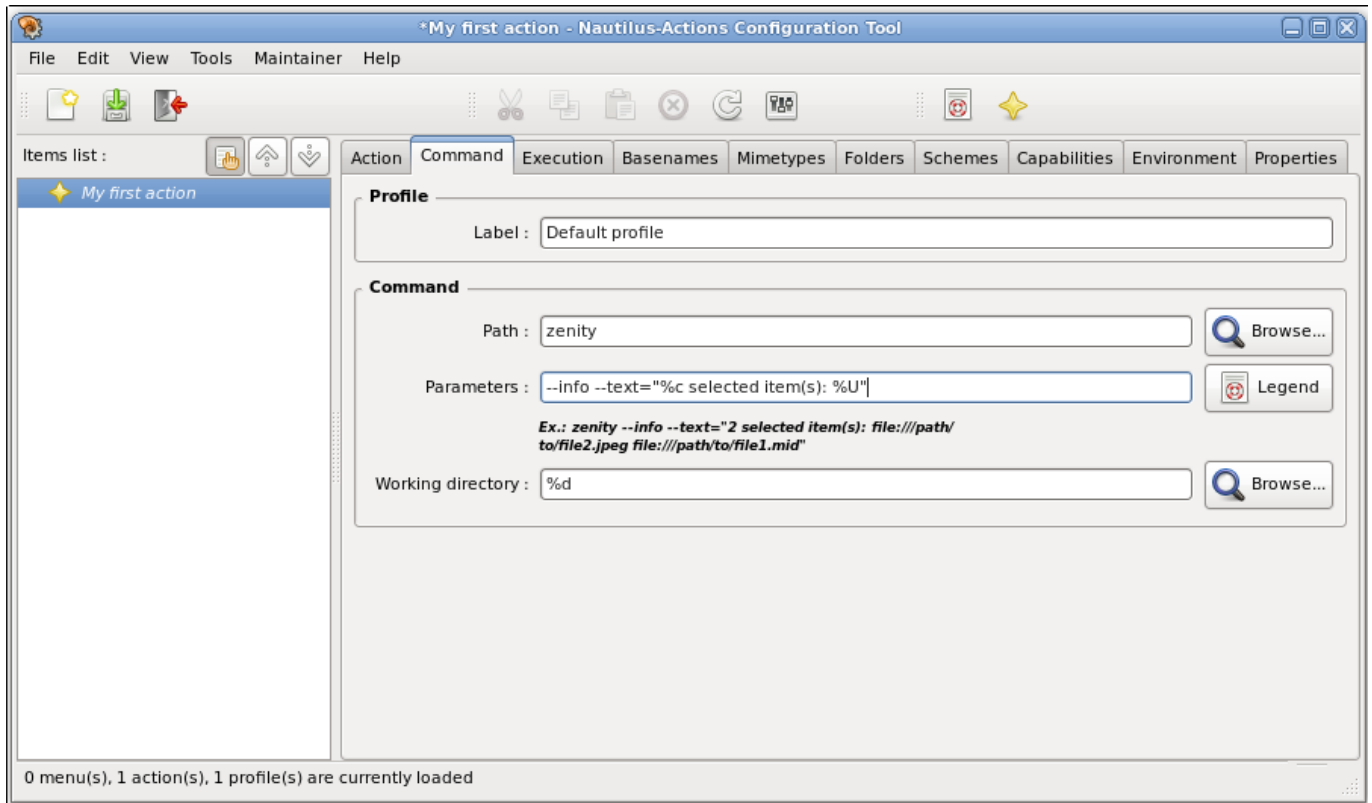
- Select  **About** in the Icon drop-down list.

The Icon selection defines the icon which will be associated with your action in file manager context menus and in the toolbar. You have two ways of choosing the icon associated to your action:

- Click on the Icon drop-down list to select an icon.
- Click on Browse to search for an image in the filesystem.

Specifying the command to be executed When you will select your action in the file manager context menu, this command will be executed, with arguments of your choice.

Click on the Command tab to show the page which will permit you to enter the command.



Command page

Figura 3: Command page

- Enter **zenity** in the Path entry box.

The Path entry box defines the command which will be executed when you will select your action in the file manager context menu.

You have two ways of defining the command to be executed:

- Enter it in the Path entry box.
- Click on Browse to select the executable file on the filesystem.

If the command you enter does not have an absolute path, then it will be searched for in the `PATH` variable at execution time.

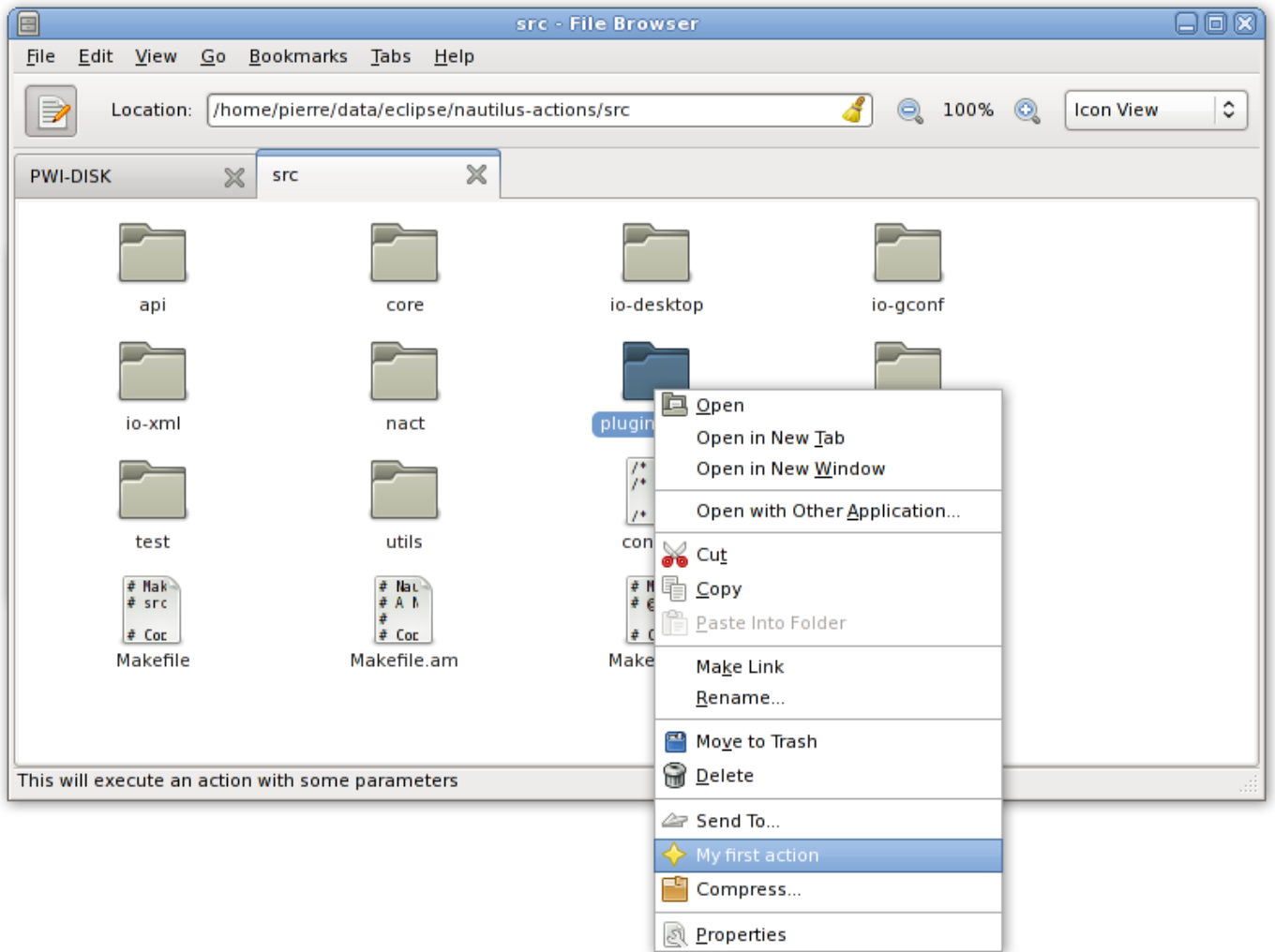
- Enter **--info --text=' %c selected item(s) : %U'** in the Parameters entry box.

The Parameters contains the arguments which will be passed to your command when it will be executed. These arguments may embed parameters which will be expanded at runtime.

If both Path and Parameters are empty, then this action will be considered as invalid: it will be displayed in red in Items list and will be never be candidate to be displayed in the file manager context menus.

Guardado To save all pending modifications, choose File → Save (**Ctrl-S**).

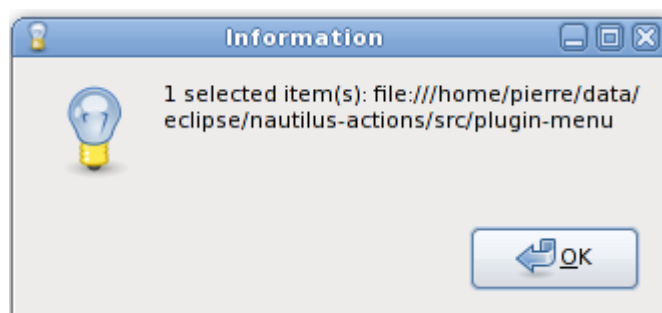
Nautilus automatically takes into account your new action, and displays it in its context menu.



Your first action in the Nautilus context menu

Figura 4: Your first action in the Nautilus context menu

Cliking of the item in the Nautilus context menu activates it, and executes the corresponding command.



The result of the execution of your first action

Figura 5: The result of the execution of your first action

3. Using Nautilus-Actions Configuration Tool

3.1. Defining the conditions

Whether your action will eventually be displayed in Nautilus file manager context menus or in its toolbar depends of the conditions you will have defined for it.

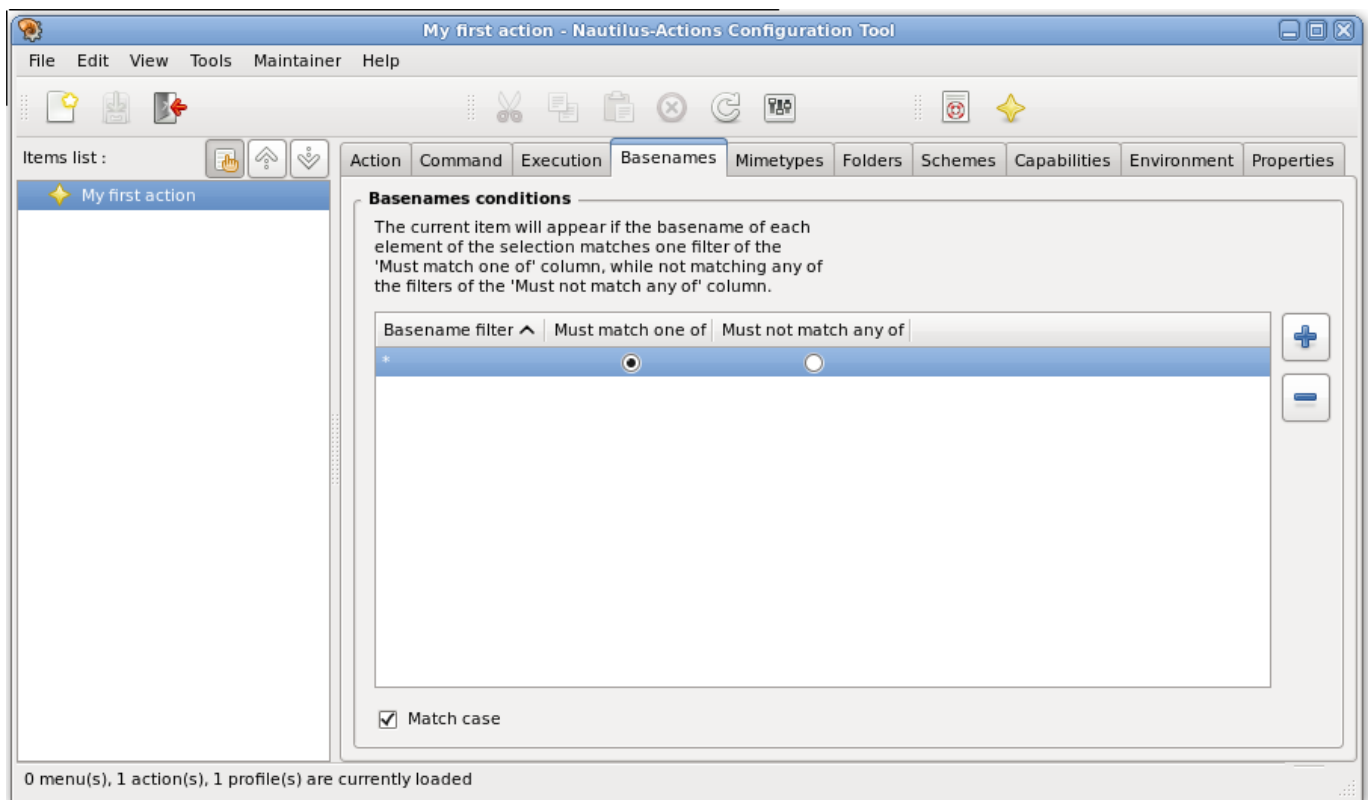
Conditions may be put against the location the file manager currently points to, or against the currently selected items in this location.

Each time the selection or the location change in the file manager, Nautilus-Actions checks all your actions, comparing the defined conditions against the new location and selection: all defined conditions must be satisfied in order your action be actually displayed.

3.1.1. Basename-based conditions

You may decide that your action will appear depending on the basenames of the items currently selected in the file-manager: you may define that each item of the selection must meet some sort of basename, and you may simultaneously decide that none of the selected item(s) can have some other sort of basename.

Click on the Basenames tab to show the page which will permit you to configure your basename-based conditions.



The basename-based conditions tab

Figura 6: Basename-based conditions


In fact, basename-based conditions are built as a list of « must match one of » and « must not match any of » patterns. In order you action be candidate regarding of these basename-based conditions, each element of the selection must be valid for all the listed conditions: the basename of each element must match at least one of the defined « must match one of » patterns, and must not match any of the defined « must not match any of » patterns.

If at least one element of the selection does not match all the defined conditions, then your action will not be displayed.

When targeting the selection context menu, your basename-based conditions will be checked against the currently selected items. When targeting the location context menu or the toolbar, your basename-based conditions will be checked against the basename of the current location.

Defining a new basename-based condition involves two steps.

1. Define the new condition filter.

- Press **Insert** or click on  button to insert a new condition filter
- Edit the newly inserted condition filter to the basename you want match.

sugerencia

A basename-based condition may use « * » or « ? » wildcard characters.

2. Indicates whether this a « must match one of » or a « must not match any of » condition.

Click on the Must match one of or Must not match any of radio button in the same row to set the corresponding condition.

Depending of your target operating system, make sure that the Match case checkbox is activated (or not).

- When activated, all filters are considered as case sensitive, which means that `/my/file` filename is considered distinct from `/My/File` one.

This is the default behavior on Unix-like systems.

- When disactivated, filters are considered as case insensitive, which means that `/my/file` and `/My/File` filenames are considered the same name.

This is most probably what you want if you target some sort of Windows system.

By default, the basename-based condition is just one « must match one of * » condition. As all basenames always match the « * » condition, this just means that basename-based conditions are not considered as relevant for the action.

3.1.2. Mimetype-based conditions

You may decide that your action will appear depending on the mimetypes of the items currently selected in the file-manager: you may define that each item of the selection must meet some sort of mimetype; and you may simultaneously decide that none of the selected item(s) can have some other sort of mimetype.

Click on the Mimetypes tab to show the page which will permit you to configure your mimetype-based conditions.



The mimetype-based conditions tab

Figura 7: Mimetype-based conditions


In fact, mimetype-based conditions are built as a list of « must match one of » and « must not match any of » patterns. In order you action be candidate regarding of these mimetype-based conditions, each element of the selection must be valid for all the listed conditions: the mimetype of each element must match at least one of the defined « must match one of » patterns, and must not match any of the defined « must not match any of » patterns.

If at least one element of the selection does not match all the defined conditions, then your action will not be displayed.

When targeting the selection context menu, your mimetype-based conditions will be checked against the currently selected items. When targeting the location context menu or the toolbar, your mimetype-based conditions will be checked against the mimetype of the current location, which happens to be the well known « inode/directory » mimetype.

Defining a new mimetype-based condition involves two steps.

1. Define the new condition filter.

- Press **Insert** or click on  button to insert a new condition filter
- Edit the newly inserted condition filter to the mimetype you want match.
A mimetype must be defined as a `group/subgroup` expression.

sugerencia

The « * » wildcard is supported only in some situations:

- The « */* » expression matches all mimetypes. As a convenient shortcut, the « * » literal is also accepted for this same purpose.
 - A `group/*` string matches all subgroups of `group` mimetype.
 - The `*/subgroup` string is not accepted as a valid wildcard.
-

2. Indicates whether this a « must match one of » or a « must not match any of » condition.

Click on the Must match one of or Must not match any of radio button in the same row to set the corresponding condition.

By default, the mimetype-based condition is just one « must match one of */* » condition. As all mimetypes always match the « */* », this just means that mimetypes are not considered as relevant for the action.

Ejemplo 3.1 Example of usual mimetypes

all/all Matches all items.

all/allfiles Matches all regular files.

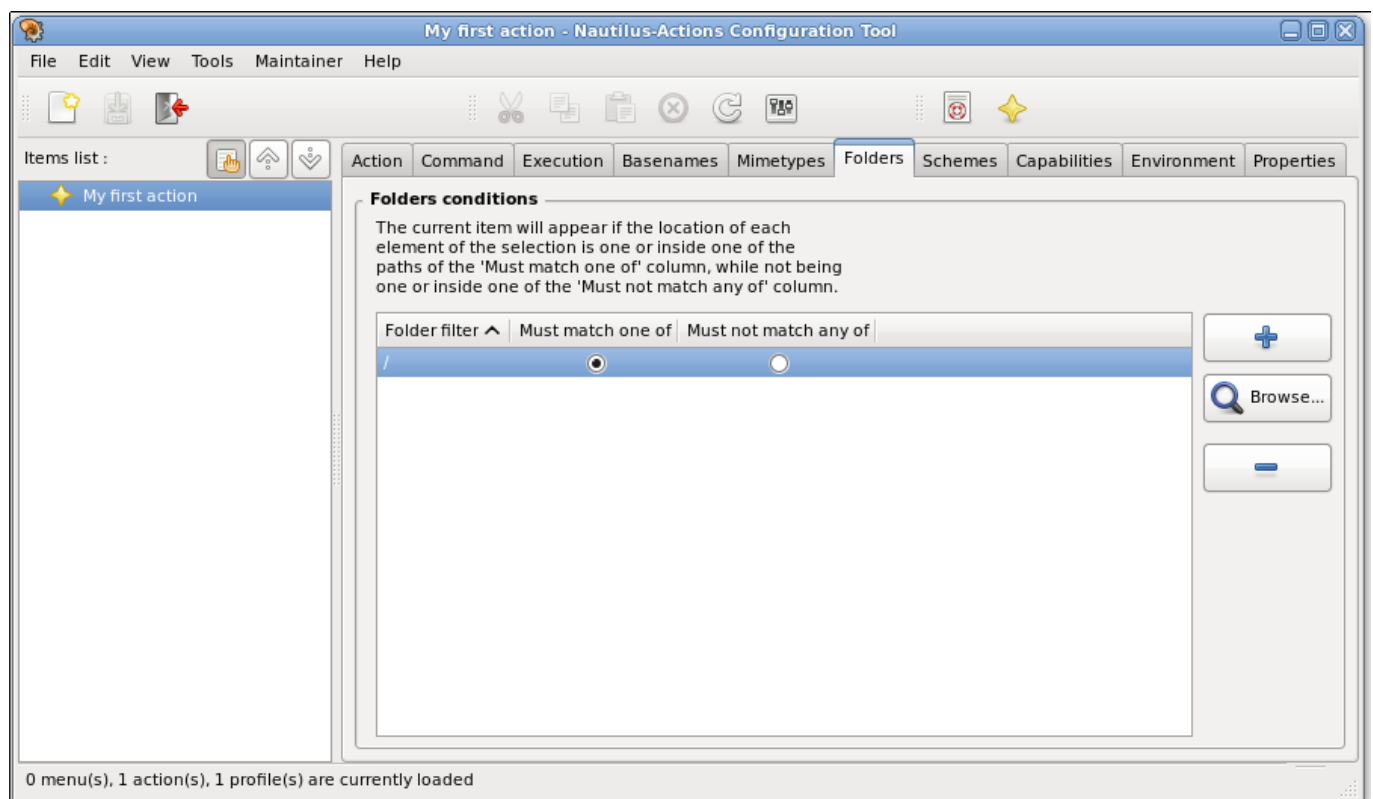
inode/directory Matches only directories.

3.1.3. Folder-based conditions

You may decide that your action will appear depending on the directory the items currently selected in the file-manager are located in: you may define that each item of the selection must be located in one hierarchy or in another; and you may simultaneously decide that none of the selected item(s) can be located in some other hierarchy.

A folder-based condition must be understood as the specification of the hierarchy in which the currently examined item should (or should not) stay: this is a pattern on the dirname of the element.

Click on the Folders tab to show the page which will permit you to configure your folder-based conditions.



The folder-based conditions tab

Figura 8: Folder-based conditions


In fact, folder-based conditions are built as a list of « must match one of » and « must not match any of » patterns. In order you action be candidate regarding of these folder-based conditions, each element of the selection must be valid for all the listed conditions: each element must located in one of the defined « must match one of » folders, and must not match any of the defined « must not match any of » folders.

If at least one element of the selection does not match all the defined conditions, then your action will not be displayed.

When targeting the selection context menu, your folder-based conditions will be checked against the dirname of each currently selected items. When targeting the location context menu or the toolbar, your folder-based conditions will be checked against the current location.

Defining a new folder-based condition involves two steps.

1. Define the new condition filter.

- Press **Insert** or click on  button to insert a new condition filter
- Edit the newly inserted condition filter to the folder you want match.

sugerencia

The « * » and « ? » characters are accepted as wildcards at any level of the defined folder filter.

- Or click on Browse to select a folder on the filesystem.

2. Indicates whether this a « must match one of » or a « must not match any of » condition.

Click on the Must match one of or Must not match any of radio button in the same row to set the corresponding condition.

By default, the folder-based condition is just one « must match one of / » condition. As / is always the top of an Unix-like filesystem, then all selected items always match this condition.

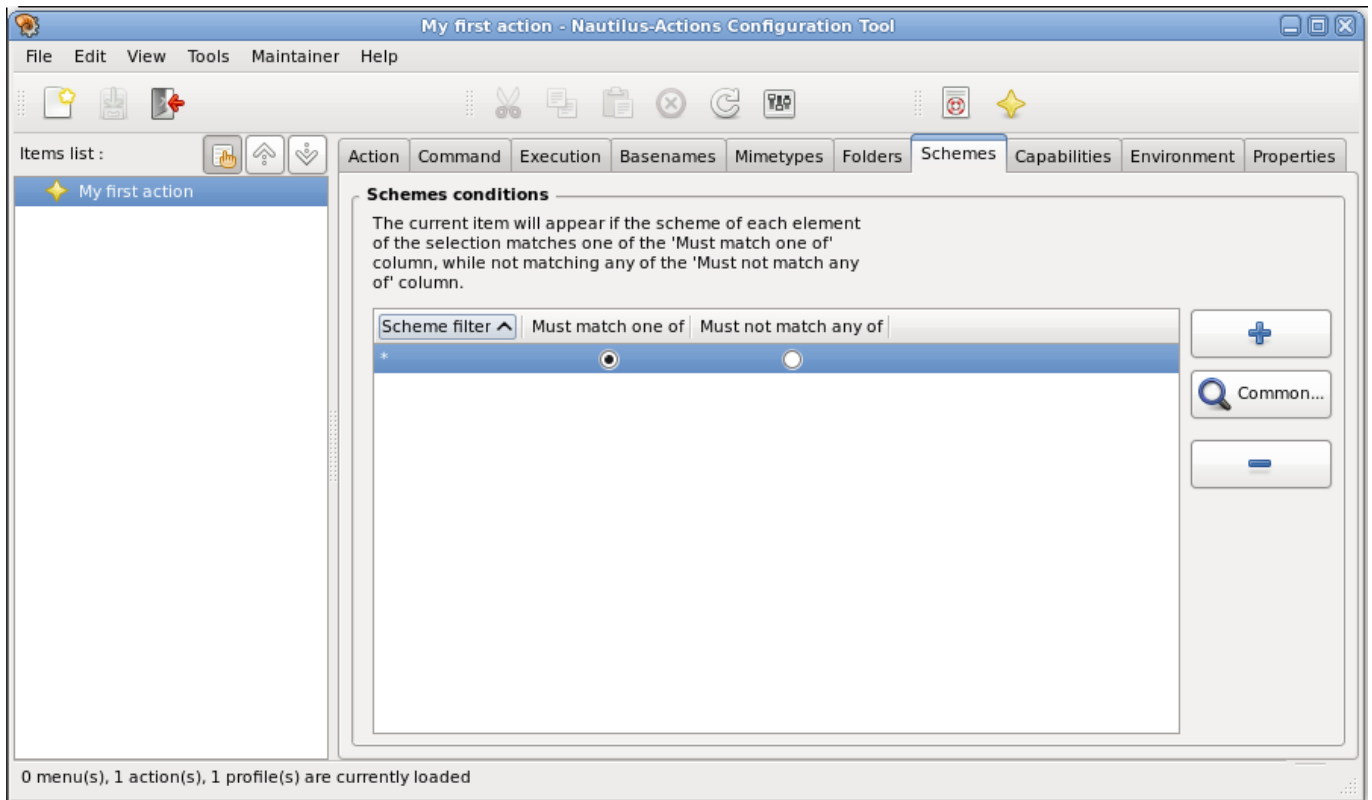
nota

If you target a Windows system, then this default value may not be what you actually want.

3.1.4. Scheme-base-conditions

You may decide that your action will appear depending on the schemes of the URIs of the items currently selected in the file-manager: you may define that each item of the selection must have some scheme; and you may simultaneously decide that none of the selected item(s) may have some other scheme.

Click on the Schemes tab to show the page which will permit you to configure your scheme-based conditions.



The scheme-based conditions tab

Figura 9: Scheme-based conditions


In fact, scheme-based conditions are built as a list of « must match one of » and « must not match any of » patterns. In order you action be candidate regarding of these scheme-based conditions, each element of the selection must be valid for all the listed conditions: the scheme of each element must match at least one of the defined « must match one of » patterns, and must not match any of the defined « must not match any of » patterns.

If at least one element of the selection does not match all the defined conditions, then your action will not be displayed.

When targeting the selection context menu, your scheme-based conditions will be checked against the currently selected items. When targeting the location context menu or the toolbar, your scheme-based conditions will be checked against the scheme of the current location.

Defining a new scheme-based condition involves two steps.

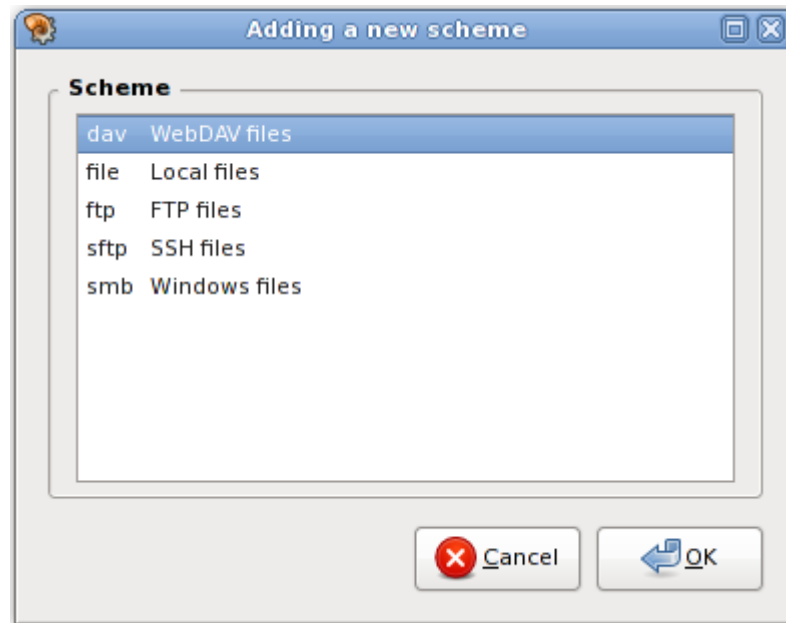
1. Define the new condition filter.

- Press **Insert** or click on  button to insert a new condition filter
- Edit the newly inserted condition filter to the scheme you want match.

sugerencia

Scheme-based conditions only accept « * » wildcard, which stands for « any scheme ».

- Or click on Common to select a scheme among those predefined in Edit → Preferences.



Selecting a scheme among predefined defaults

Figura 10: Selecting a scheme among predefined defaults

A new scheme may only be selected here if it is not already defined as a scheme filter.
To select a new scheme, click OK, or double-click on the desired row.

2. Indicates whether this a « must match one of » or a « must not match any of » condition.

Click on the Must match one of or Must not match any of radio button in the same row to set the corresponding condition.

By default, the scheme-based condition is just one « must match one of * » condition, which means that schemes are not relevant for this action.

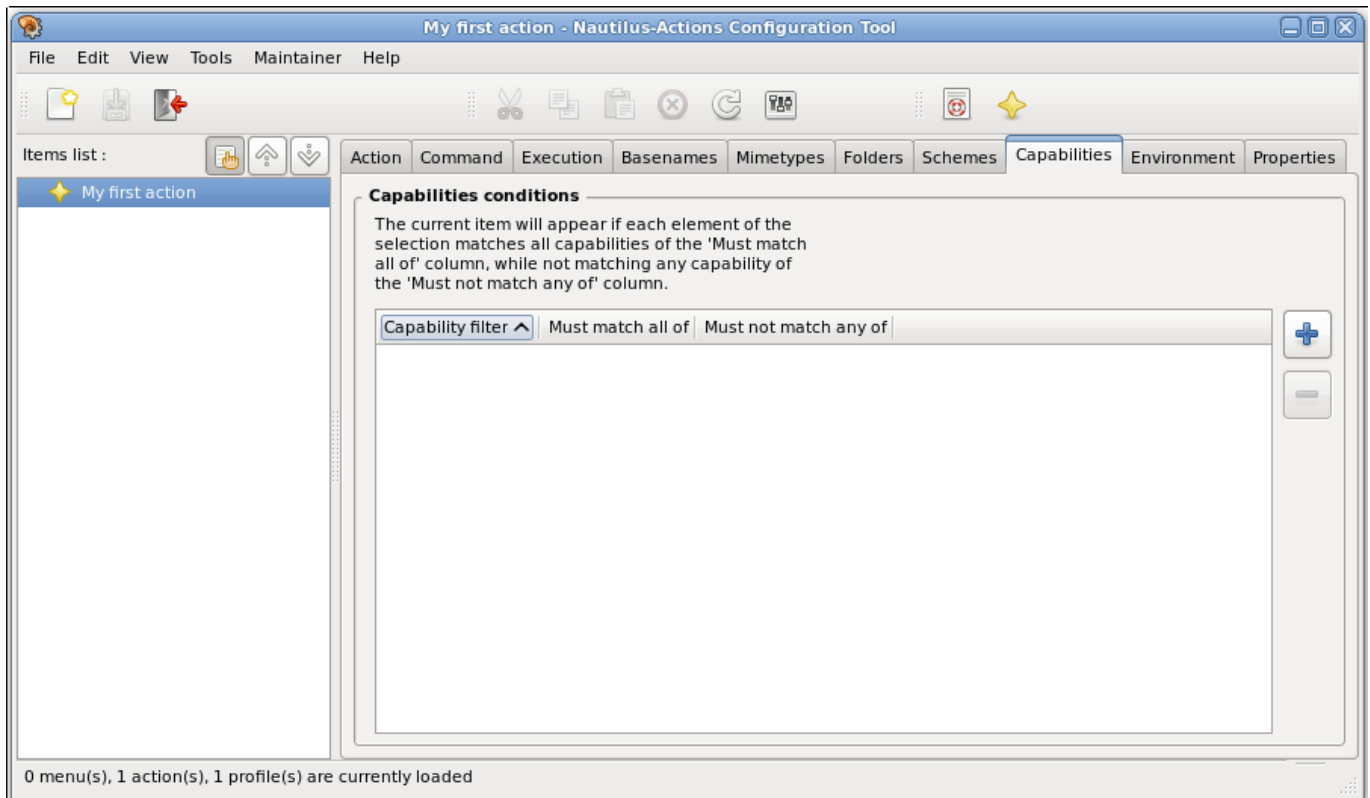
3.1.5. Capability-based conditions

Capabilities are some properties that a file may exhibit to the user.

But the `Local` capability, all others are dependant of the user who executes the command.

You may so decide that your action will appear, or not, depending on the capabilities of the selected item(s) vs. the current user.

Click on the Capabilities tab to show the page which will permit you to configure your capability-based conditions.



The capability-based conditions tab

Figura 11: Capability-based conditions


In fact, capability-based conditions are built as a list of « must match all of » and « must not match any of » patterns. In order you action be candidate regarding of these capability-based conditions, each element of the selection must be valid for all the listed conditions: the capability of each element must match each of the defined « must match all of » capabilities, and must not match any of the defined « must not match any of » ones.

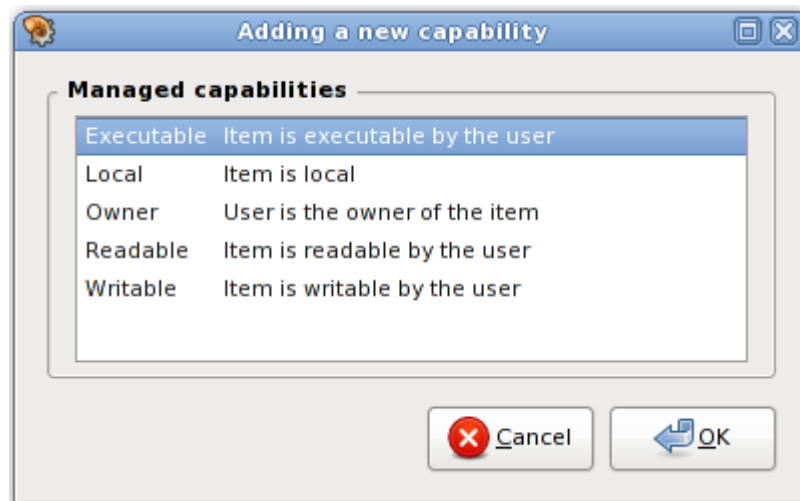
If at least one element of the selection does not match all the defined conditions, then your action will not be displayed.

When targeting the selection context menu, your capability-based conditions will be checked against the currently selected items. When targeting the location context menu or the toolbar, your capability-based conditions will be checked against those of the current location.

Defining a new capability-based condition involves two steps.

1. Define the new condition filter.

- Press **Insert** to insert a new condition filter
- Edit the newly inserted condition filter to the capability you want match.
- Or click on  to open the Adding a new capability dialog box.



The list of managed capabilities

Figura 12: Managed capabilities

A new capability may only be selected here if it is not already defined as a capability filter.

To select a new capability, click OK, or double-click on the desired row.

2. Indicates whether this a « must match all of » or a « must not match any of » condition.

Click on the Must match all of or Must not match any of radio button in the same row to set the corresponding condition.

By default, the capability-based condition list is empty. This means that capabilities are not relevant for this action.

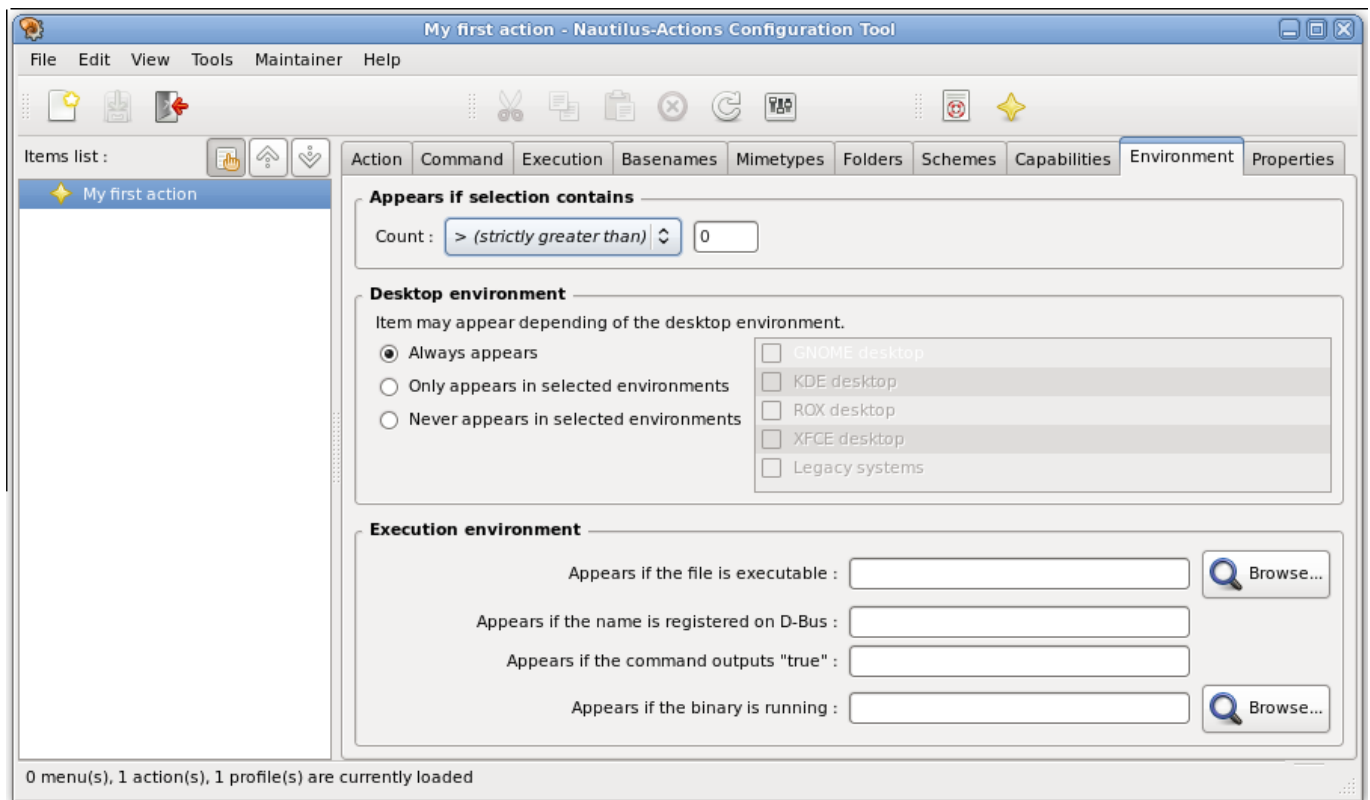
3.1.6. Selection count condition

You may define that your action will only appear if the current selection in the file manager has some precise count, or some precise relation with a given count.

Ejemplo 3.2 A selection count use case

If your action consists in displaying the differences between two files, you may define here « Count = (equal to) 2 ».

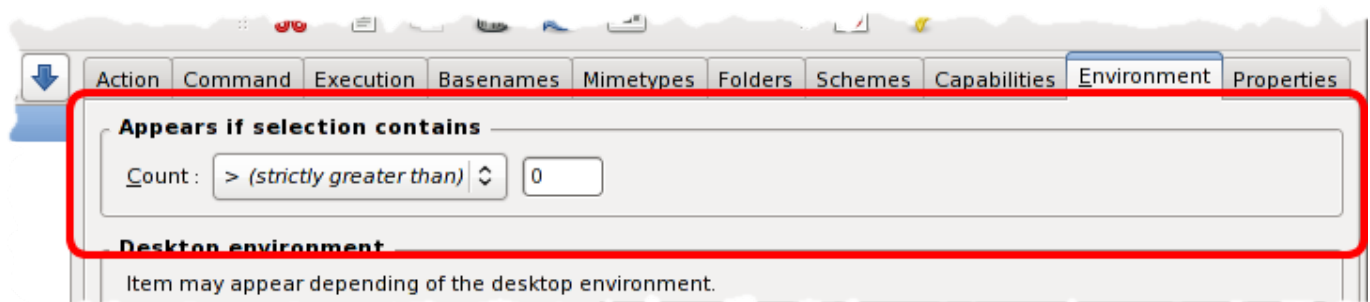
Click on the Environment tab to show the page which will permit you to configure your environment-based conditions.



The environment-based conditions tab

Figura 13: Environment-based conditions

The selection count condition is defined in the Appears if selection contains frame.



Selection count condition frame

Figura 14: Selection count condition frame

When targeting the selection context menu, the count condition defined here will be checked against the count of currently selected items. When targeting the location context menu or the toolbar, the count condition will be checked against zero because there is no selected item in this case.

To define a selection count condition:

- Select in the Count drop-down list the operator you want apply to the selection count:

- < (strictly less than)
- = (igual a)
- > (strictly greather than)

- Enter the reference count you wish.

The selection count defaults to «Count > (strictly greater than) 0 », which means that the action will be candidate to be displayed as soon as at least one item is selected in the file manager.

3.1.7. Desktop selection

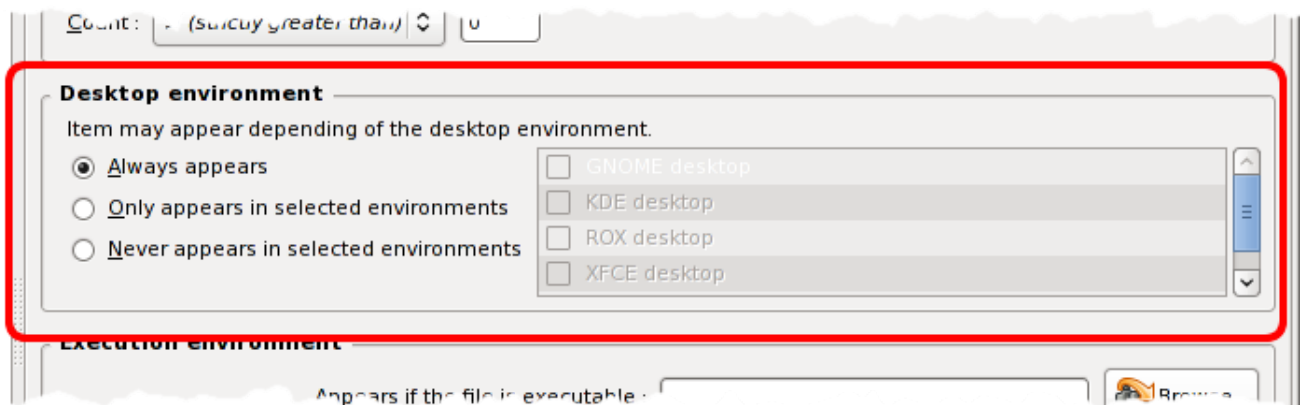
You may define that your action:

- will always appear,
- or will only appear in some given desktop environments,
- or will not appear in some given desktop environments.

Only one choice between these three items is possible.

Click on the Environment tab to show the page which will permit you to configure your environment-based conditions.

The desktop selection is defined in the Desktop environment frame.



Desktop selection frame

Figura 15: Desktop selection frame

To define the desktop environment condition:

1. First select the type of filter:
 - does your action should always appear, regarding of the desktop environment ?
 - does your action should only appear in some desktop environment(s) ?
 - does your action should never appear in some desktop environment(s) ?
2. If your action should not always appear, then select the relevant desktop environment(s) in the listbox in the right side.

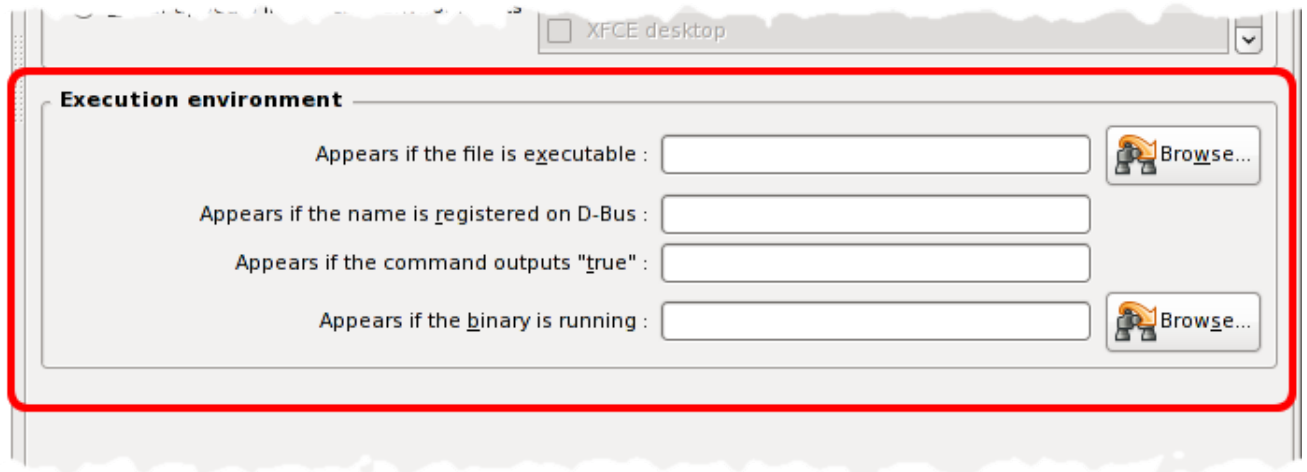
The targeted desktop environment condition defaults to « Always appear », which means that the action will be candidate to be displayed regarding of the current desktop environment.

3.1.8. Executable found condition

You may define that your action will only appear if some prerequisite package is installed on your system. This is checked here by specifying that a specific file, known or at least supposed to be provided by the package, must be present on the filesystem, and executable.

Click on the Environment tab to show the page which will permit you to configure your environment-based conditions.

The executable found condition is defined in the Execution environment frame.



Execution environment frame

Figura 16: Execution environment frame

To define the relevant file, enter its full filename in the Appears if the file is executable entry box, or click on Browse to select a file on the filesystem.

Leave the field empty if this condition is not relevant for your action.

sugerencia

You may embed some parameters in the searched filename. These parameters will be dynamically substituted at runtime with values which will depend of currently selected item(s).

3.1.9. D-Bus registration condition

You may define that your action will only appear if some given name is registered on D-Bus system at runtime.

Click on the Environment tab to show the page which will permit you to configure your environment-based conditions, and focus on Execution environment frame.

To define the relevant name, enter it in the Appears if the name is registered on D-Bus entry box.

Leave the field empty if this condition is not relevant for your action.

sugerencia

You may embed some parameters in the searched name. These parameters will be dynamically substituted at runtime with values which will depend of currently selected item(s).

3.1.10. Customized condition

You may define that your action will only appear if some given command outputs a `true` string on its standard output.

Click on the Environment tab to show the page which will permit you to configure your environment-based conditions, and focus on Execution environment frame.

This lets you define your own customized condition filter, by writing a small script which outputs, or not, the `true` string on stdout when it is ran.

To define the command, enter it in the Appears if the command outputs "true" entry box.

Leave the field empty if this condition is not relevant for your action.

sugerencia

You may embed some parameters in the executed filename or its options. These parameters will be dynamically substituted at runtime with values which will depend of currently selected item(s).

3.1.11. Running process condition

You may define that your action will only appear if some given binary is currently running.

Click on the Environment tab to show the page which will permit you to configure your environment-based conditions, and focus on Execution environment frame.

To define the binary, enter its name in the Appears if the binary is running entry box, or click on Browse to select a file on the filesystem.

nota

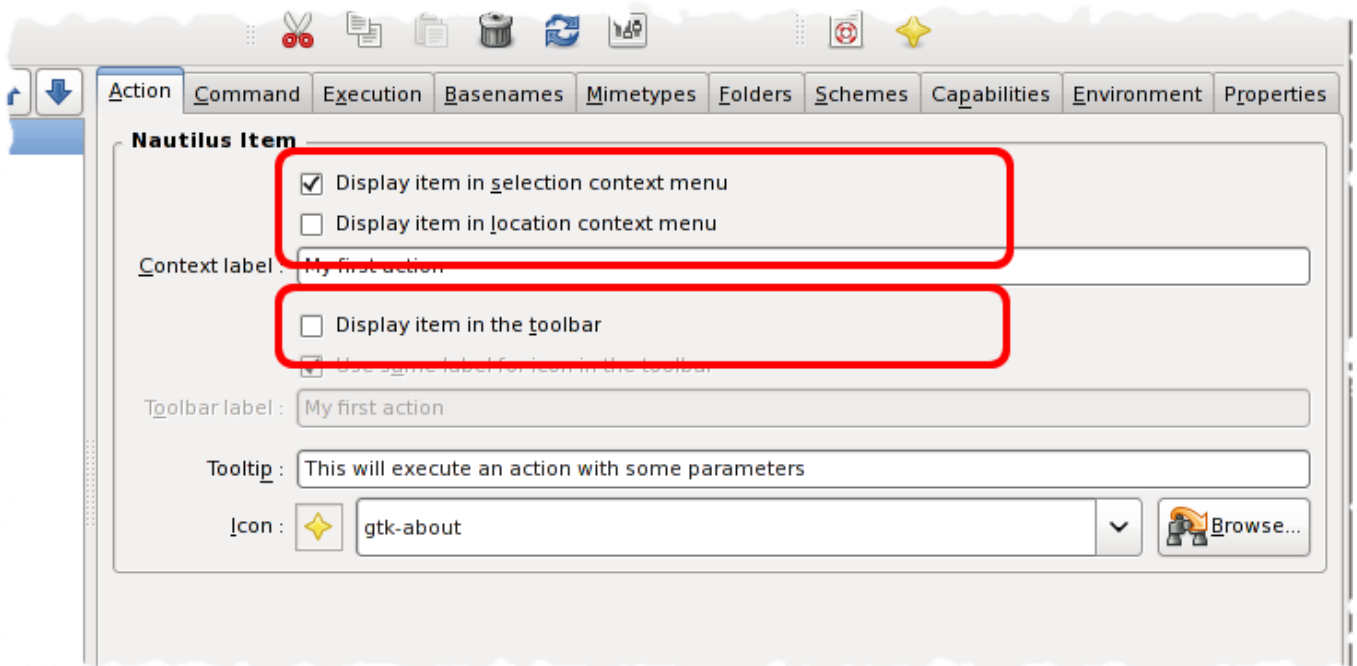
Even if you enter here the full filename of a binary, only its basename will be searched for in the processes list at runtime.

Leave the field empty if this condition is not relevant for your action.

sugerencia

You may embed some parameters in the searched name. These parameters will be dynamically substituted at runtime with values which will depend of currently selected item(s).

3.2. Locating the action



Target configuration

Figura 17: Target configuration

Nautilus file manager may display your action in different places, depending on what you will request here, and if some item is currently selected (or not).

Click on the Action tab to show the page which will permit you to configure the locations your action targets.

3.2.1. Targeting the selection context menu

When Display item in selection context menu is checked, then your action will be candidate to be displayed in Nautilus context menu as soon as at least one item is selected in the file manager. Your action will so deal with currently selected item(s). In order to be actually displayed, all the conditions defined in your candidate action must be met by each item currently selected in the Nautilus file manager.

sugerencia

When an action targets the selection context menu, and is actually displayed in Nautilus context menu, then it is also displayed in Nautilus Edit menu.

This target is checked by default.

3.2.2. Targeting the location context menu

When Display item in location context menu checkbox is activated, then your action will be candidate to be displayed in Nautilus context menu when the file manager selection is empty. Your action will so deal with currently displayed location. In order to be actually displayed, all the conditions defined in your candidate action must be met by the location currently displayed in the Nautilus file manager.

sugerencia

When an action targets the location context menu, and is actually displayed in Nautilus context menu, then it is also displayed in Nautilus File menu.

3.2.3. Targeting the toolbar

When Display item in the toolbar checkbox is activated, then your action will be candidate to be displayed in Nautilus toolbar.

Actions displayed in the toolbar only deal with the location which is currently displayed in the file-manager, not with the items which may be currently selected (or not). In order to be displayed, all the conditions defined in your candidate action must so be met by the current location.

3.2.4. Notas

If your action is to be displayed in a context menu Whether it is the selection context menu or the location context menu, and both in Nautilus context menus and in File or Edit menus, it will be displayed as

- the Context label as a label,
- the Icon,
- these two properties being associated with the Tooltip.

nota

Depending of the exact configuration of your desktop environment, the icon may or may not be displayed in front of the label in the menu.

sugerencia

You may embed some parameters in the label, the icon name or the tooltip. These parameters will be dynamically substituted at runtime with values which will depend of currently selected item(s).

If your action is to be displayed in the toolbar It will be displayed as

- the Toolbar label as a label,
- the Icon,
- these two properties being associated with the Tooltip.

nota

Depending of the exact configuration of your desktop environment, the toolbar label may or may not be displayed in front of the icon in the toolbar.

sugerencia

The toolbar label defaults to the same label than those used in menus. By unchecking the Use same label for icon in the toolbar checkbox, then you can define a label specific to the toolbar, usually shorter than those defined for the menus.

sugerencia

You may embed some parameters in the toolbar label, the icon name or the tooltip. These parameters will be dynamically substituted at runtime with values which will depend of currently selected item(s).

Defining several targets An action may target both the selection context menu, the location context menu and the toolbar, or one or more among these.

Defining no target at all If no target is defined, i.e. if the three checkboxes are unchecked, then your action will never be displayed.

3.3. What the action should it execute ?

You most probably want your action eventually ends up with executing something. And, as a matter of fact, having something to execute is one of the few conditions which are required in order an action be considered as valid.

As we have already seen, the command to be executed is configured in the Command page.

This command may take arguments, which themselves may embed parameters. These parameters will be expanded at runtime, with values which will depend of currently selected item(s).

3.3.1. Available parameters

In the Command page, click on Legend button to see the list of available parameters.



The available parameters

Figura 18: List of available parameters

sugerencia

The Legend button has a toggling action: click once to display the Parameter Legend dialog box; click a second time to hide it.

nota

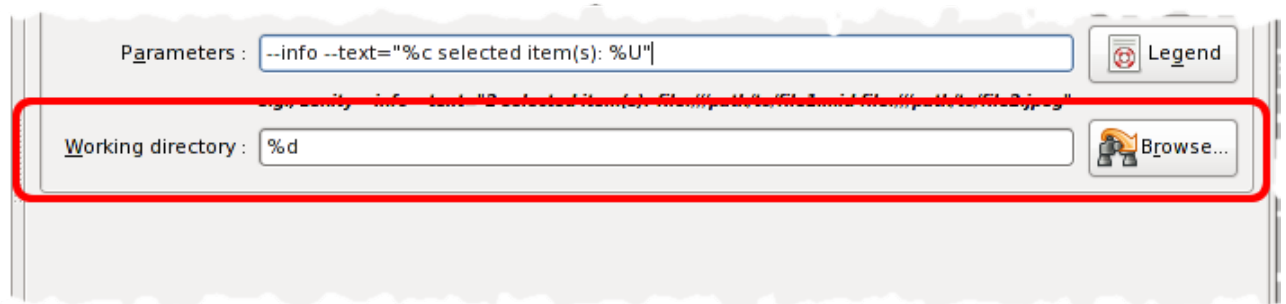
The word « first » may be misleading as it only refers to the list of selected items internally provided by the file manager to the Nautilus-Actions plugin.

In particular, it has *nothing to do* with the visual selection you may have done in the file manager window. And, in fact, which is the « first » selected item in a multiple selection is absolutely undefined and rather unpredictable.

3.3.2. Where the action should it be executed ?

Your action may be executed in a particular working directory.

You may specify it in the Command tab, in the Working directory entry box, or by clicking on Browse to select a folder on the filesystem.



Working directory frame

Figura 19: Working directory frame

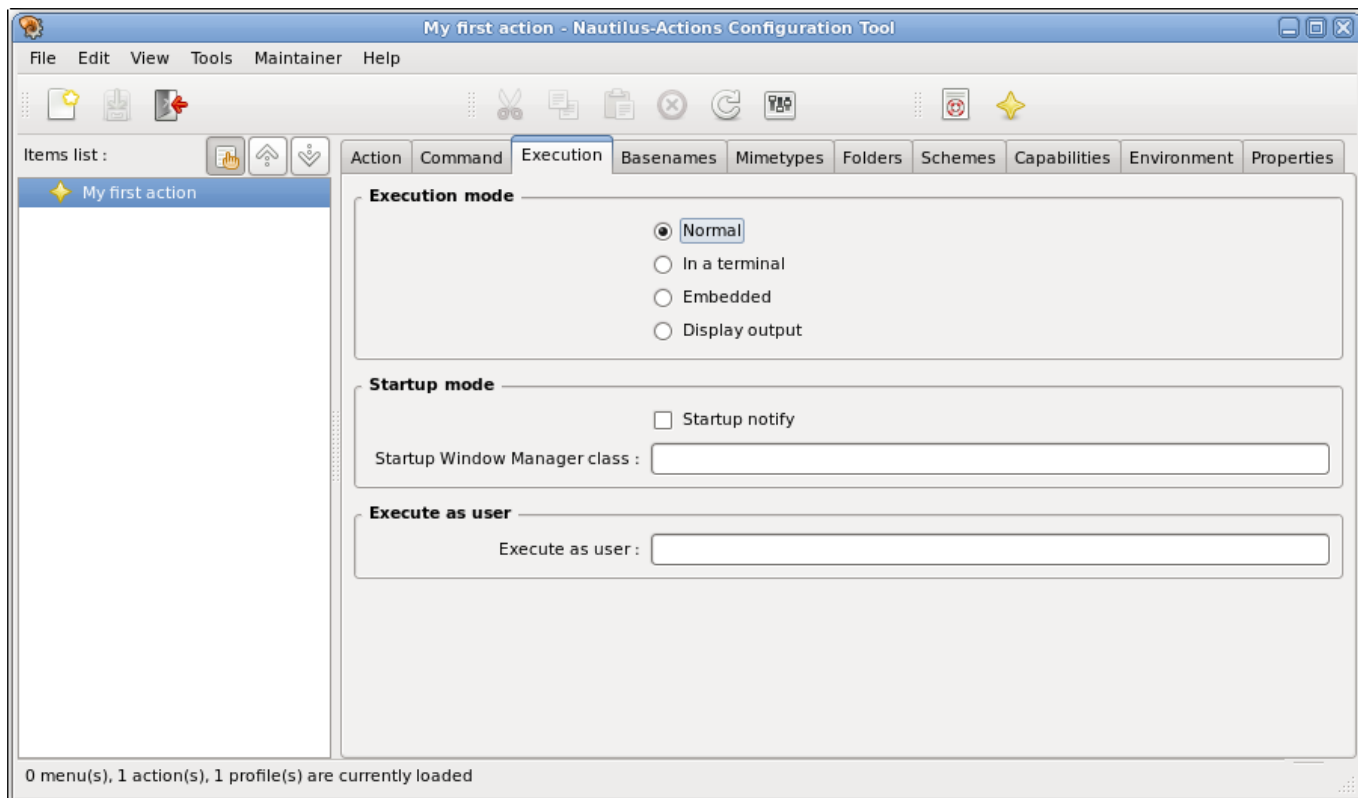
The working directory defaults to `%d`, which runs the command in the base directory of the (first) selected item.

In the particular case of the `%d` parameter, which is the « first » selected item is not very important: we are rather sure that all selected items are located in the same base directory.

3.3.3. How the action should it be executed ?

Apart from configuring the conditions the selection must met in order your action be displayed in file manager menus, Nautilus-Actions allows you to configure how exactly your command will be executed.

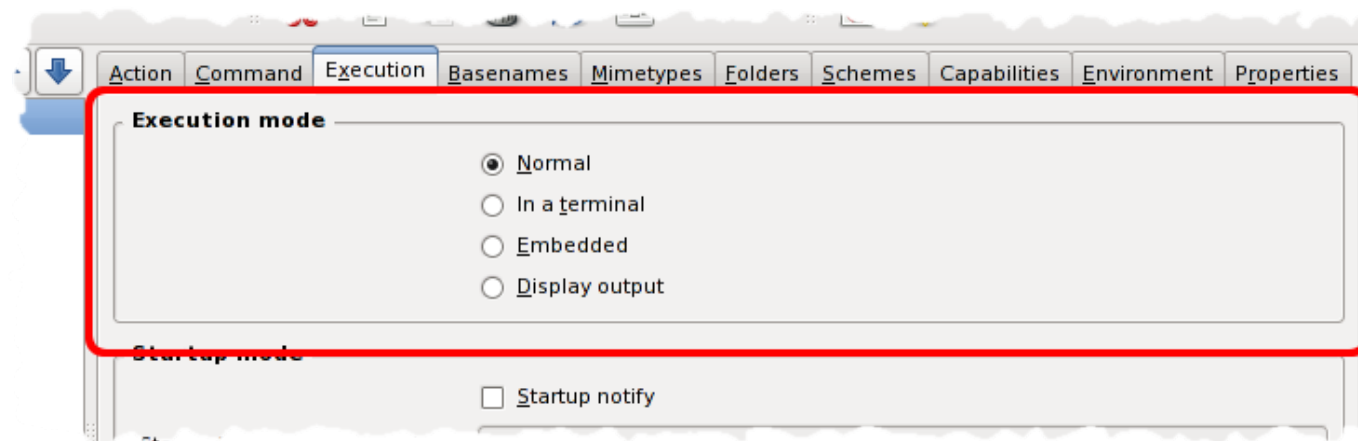
Click on the Execution tab to show the page which will permit you to configure the execution of your command.



Configuration of the execution modes

Figura 20: Configuration of the execution modes

3.3.3.1. Modo de ejecución



Configuration of the execution mode

Figura 21: Configuration of the execution mode

The execution mode of your command may be chosen between following values:

Normal Starts the command as a standard graphical user interface.

Terminal Starts the preferred terminal of the desktop environment, and runs the command in it.

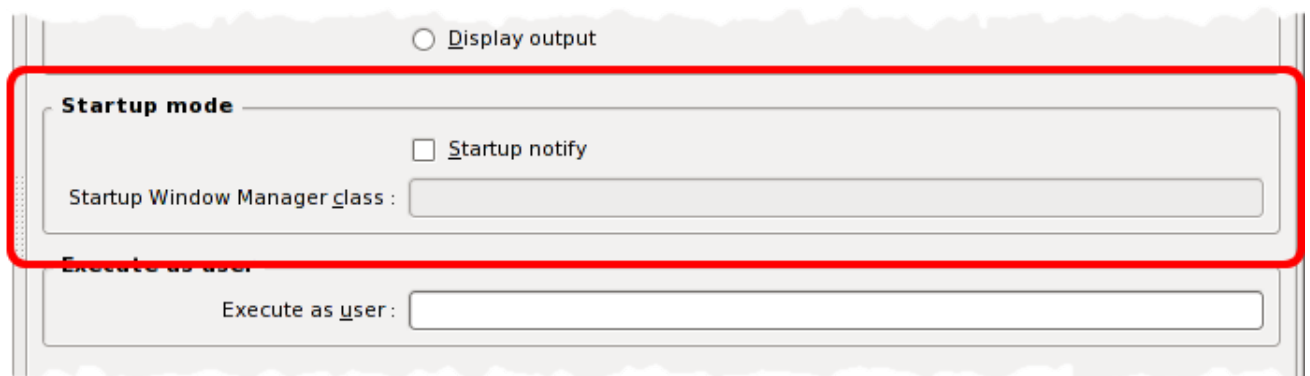
Empotrado Makes use of a special feature of the file manager which may allow a terminal to be ran in it.

As Nautilus does not have this feature, this option is strictly equivalent to `Terminal` option.

Display output Starts the preferred terminal of the desktop environment, and runs the command in it. At end, standard streams (stdout, stderr) are collected and displayed.

The execution mode of a command defaults to `Normal`. That is, the command is executed without any particular pre- or post-work.

3.3.3.2. Notificación de inicio



Configuration of the startup modes

Figura 22: Configuration of the startup modes

If the execution mode of the command is `Normal`, and if you know that the application will send a `remove` message with the `DESKTOP_STARTUP_ID` environment variable set, then check the `Startup notify` checkbox.

See the [Startup Notification Protocol Specification](#) for more details.

3.3.3.3. Window class

If the execution mode of the command is `Normal`, and if you know that the application will map at least one window with a given class name, then enter that name into the `Startup Window Manager class` entry box.

See the [Startup Notification Protocol Specification](#) for more details.

3.3.3.4. Owner of the execution



Configuration of the owner of the run

Figura 23: Configuration of the owner of the run

Enter in the Execute as user entry box the username or the UID of the user your command must be ran as.

If you do not enter anything in this field, then the command will be executed as the current user.

3.3.3.5. Multiple execution

You may want your command be executed once, giving it the list of selected items as argument.

Or you may prefer your command be repeated for each selected item, giving to each execution a different item as argument.

Actually, Nautilus-Actions automatically handles these two behaviors, depending of the form and the order of the parameters in the command arguments.

Though some parameters are not sensible to the count of the selection (e.g. « %C », the selection count itself), most have two declensions:

- a « singular » one, e.g. « %b », the basenane of the selected item;
- a « plural » one, e.g. « %B », the space-separated list of the basenames of selected items.

When the selection is empty or contains only one element, and from this topic point of view, these two forms are exactly equivalent.

When the selection contains more than one item:

- if the first relevant parameter is of a singular form, then Nautilus-Actions will consider that the command is only able to deal with one item at a time, and thus that it has to be ran one time for each selected item;
- contrarily, if the first relevant parameter found is of the plural form, then Nautilus-Actions will consider that the command is able to deal with a list of items, and thus the command will be executed only once;
- if all found parameters are irrelevant, then Nautilus-Actions defaults to consider that the command should be executed only once.

Parámetro	Descripción	Said form		
		singular		plural
%b	(first) basename	singular		
%B	space-separated list of basenames			plural
%c	count of selected items		irrelevant	
%d	(first) base directory	singular		
%D	space-separated list of base directory of each selected items			plural
%f	(first) filename	singular		
%F	space-separated list of selected filenames			plural
%h	hostname of the (first) URI		irrelevant	
%m	mimetype of the (first) selected item	singular		
%M	space-separated list of the mimetypes of the selected items			plural
%n	username of the (first) URI		irrelevant	
%o	no-op operator which forces a singular form of execution	singular		
%O	no-op operator which forces a plural form of execution			plural
%p	port number of the (first) URI		irrelevant	
%s	scheme of the (first) URI		irrelevant	
%u	(first) URI	singular		
%U	space-separated list of selected URIs			plural
%w	(first) basename without the extension	singular		
%W	space-separated list of basenames without their extension			plural
%x	(first) extension	singular		
%X	space-separated list of extensions			plural
% %	the « % » character		irrelevant	

Cuadro 1: Characterization of the parameters vs. multiple execution

Ejemplo 3.3 Usage of singular vs. plural forms

Say the current folder is /data, and the current selection contains the three files pierre, paul and jacques.

If we have requested **echo %b**, then the following commands will be successively run:

echo pierre

echo paul

echo jacques

This is because %b marks a *singular* parameter. The command is the run once for each of the selected items.

Contrarily, if we have requested **echo %B**, then the following command will be run:

echo pierre paul jacques

This is because %B marks a *plural* parameter. The command is then run only once, with the list of selected items as arguments.

If we have requested **echo %b %B**, then the following commands will be successively run:

echo pierre pierre paul jacques

echo paul pierre paul jacques

echo jacques pierre paul jacques

This is because the first *relevant* parameter is %b, and so the command is run once for each selected item, replacing at each occurrence the %b parameter with the corresponding item. The second parameter is computed and added as arguments to the executed command.

And if we have requested **echo %B %b**, then the following commands will be run:

echo pierre paul jacques pierre

This is because the first *relevant* parameter here is %B. The command is then run only once, replacing %B with the space-separated list of basenames. As the command is only run once, the %b is substituted only once with the (first) basename.

3.4. Using profiles to extend your action

There is some situations where you will want a given action behave slightly differently depending on the currently selected items or the current runtime environment.

Ejemplo 3.4 Open a terminal here

Say you have an action which opens a terminal in the current location.

You have configured it to open your preferred terminal in the location your file manager currently points to.

But what if you want select a directory in your file manager, and directly opens your terminal in this directory ? If you keep based on the current file manager location, your terminal will open in the parent of the targeted directory.

One solution is to define a new profile to your action, configuring this profile to open the terminal in the targeted directory.

At runtime, Nautilus-Actions will successively examine each profile attached to your action. If the first profile targets a file while you have selected a directory, then Nautilus-Actions will just try with your second profile.

To create a new profile, first select the action in the items list, then choose File → New profile.

A new profile is created in your action.

You can now define the conditions which are to be met in order this profile be selected, and the command which will be executed.

3.4.1. Ordering the profiles inside an action

At runtime, Nautilus-Actions will begin with examining the conditions set on your action.

If these conditions (the action-conditions) are met, then Nautilus-Actions will examine in order each profile.

If the conditions defined in a profile are met, then this profile will be validated, and the review of other profiles will stop.

If no profile is found valid at runtime, then the action will be itself considered invalid, and will not be displayed in the file manager context menu.

So, ordering of the profiles may be important for your action: the first valid profile found, the first - and the only - selected profile.

You may order your profiles inside an action in two ways.

1. Cut the profile to be moved, select the profile before which you want your cut profile to be inserted, and paste it.
2. Click on the profile to be moved, and drag it to its right place.

3.5. Organizing actions in menus

As your list of actions will grow, you most probably will want organize them into menus, submenus, and so on.

In order to create a new menu, choose File → New menu.

A menu may be created anywhere in the list of your actions, but inside of an action (i.e. not between two profiles of an action).

As an action, the exact place where a new menu will be inserted depends of the current sort order:

Manual order: The new menu is inserted just before the current action or menu.

This place will not change when you later modify the label of the menu.

Ascending (resp. descending) alphabetical order: The new menu is inserted at the correct place, regarding the default « New Nautilus menu » label.

This place will be automatically changed, each time you modify the label of the menu.

As an action, too, a menu requires a label, and may have an icon and a tooltip. Also, you may define some conditions in order your menu be candidate to be displayed in Nautilus context menu. If the defined conditions are not met at runtime, then your whole menu, including its submenus, its actions and so on, will not be displayed.

3.6. Sorting the items list

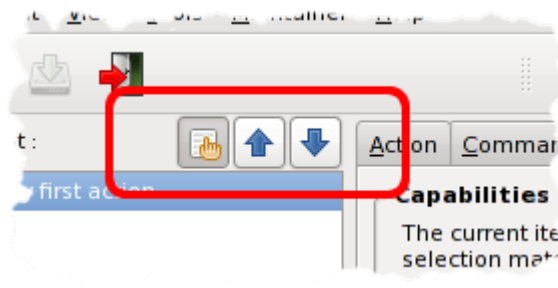
Your actions and menus will be displayed in file manager context menus in the same order that they are listed in the Items list, on the left pane of the main Nautilus-Actions Configuration Tool window.

You may decide to:

- sort your actions and menus in ascending or descending alphabetical order of their label,
- or do not sort, and manually organize your actions and menus in your own order.

3.6.1. Alphabetically sorting your actions and menus



In these modes, actions and menus are sorted depending of their label, inside of their parent.



Sort buttons in the main window

Figura 24: Sort buttons in the main window


You may sort your actions by:

- Click on  (resp. ) button to sort your actions in ascending (resp. descending) order.
- Or edit your corresponding preference.

3.6.2. Manually organizing your actions and menus

In this mode, a new action or a new menu will be inserted just before the current action or menu, inside of the same parent if apply.

To choose this mode:

- Click on  button.
- Or edit your corresponding preference.

3.7. Editando

With Nautilus-Actions Configuration Tool, you may safely cut, copy, paste to and from the clipboard.

3.7.1. Cut/Delete

Deletion applies to current selection. When the current selection covers all profiles of an action, the delete action really delete the selected profiles, leaving the action as invalid if all profiles were selected.

3.7.2. Multiple selection

Multiple selection is possible in Nautilus-Actions Configuration Tool. You can extend the current selection by pressing the touch **Ctrl** or **Shift** while selecting an item to add to the selection.

Nautilus-Actions Configuration Tool only accepts homogeneous multiple selections. That is, you may select one or more profiles, or one or more actions or menus. A multiple selection containing both profiles and actions or menus is not allowed. This is because Nautilus-Actions Configuration Tool would not know where to paste such a selection.

Note that selecting any row means also selecting children of this row. These childs are said « implicitly selected »: they will be part of next edition operations, but are not considered when verifying if selection is homogeneous. Also, they cannot be unselected.

3.8. Saving your modifications

To save your modifications, choose File → Save (**Ctrl-S**).

All your pending modifications will be saved. New items will be created by the first available writable I/O provider.

Nautilus-Actions also has an Auto-save feature which is configurable in Preferences dialog box.

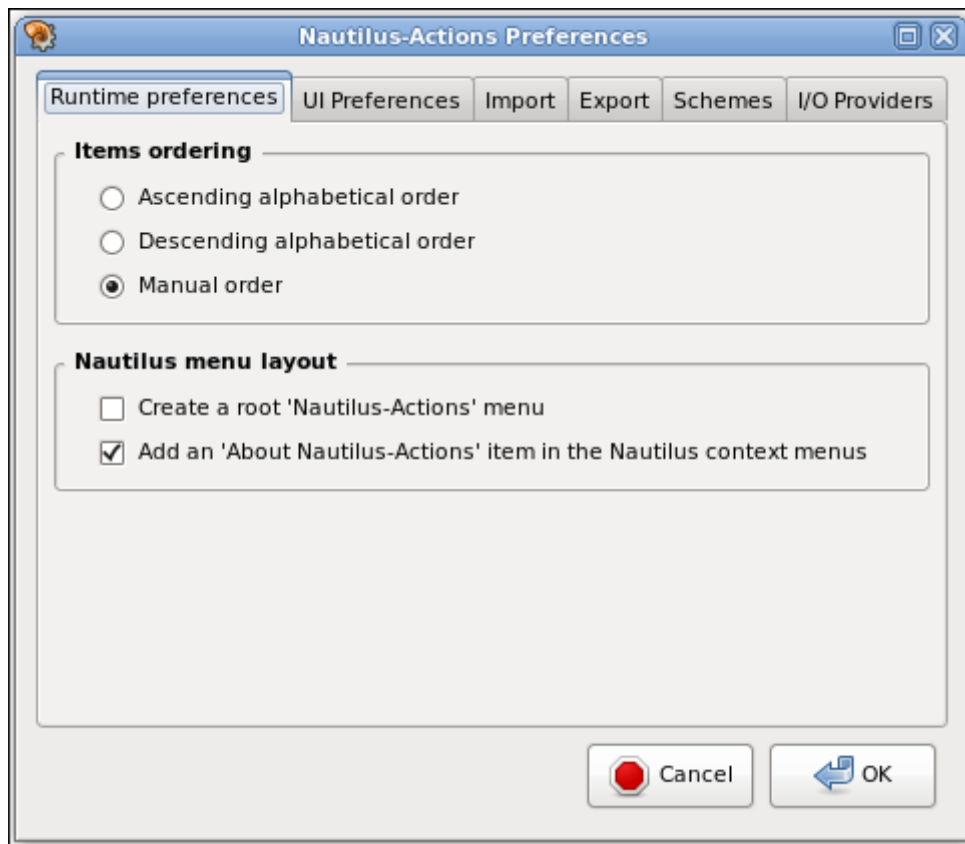
3.9. Exporting your actions

3.10. Acciones de importación

3.11. Setting your own preferences

Choose Edit → Preferences to access to the configuration of your preferences.

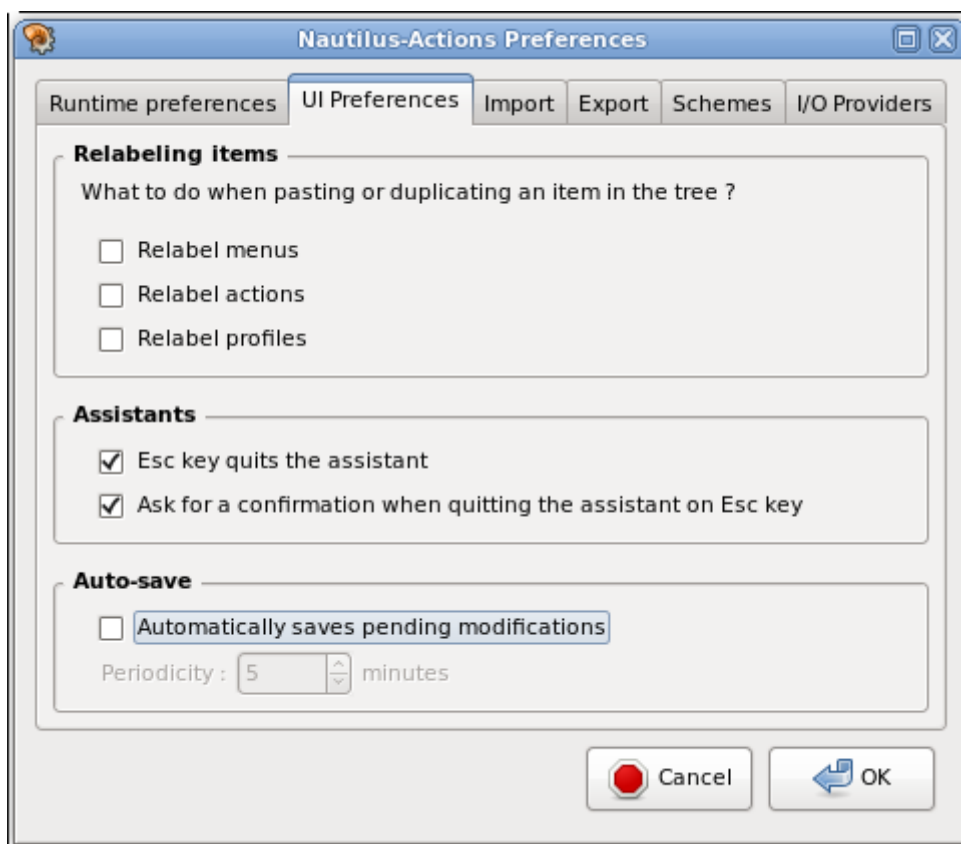
3.11.1. Preferencias de ejecución



Preferencias de ejecución

Figura 25: Preferencias de ejecución

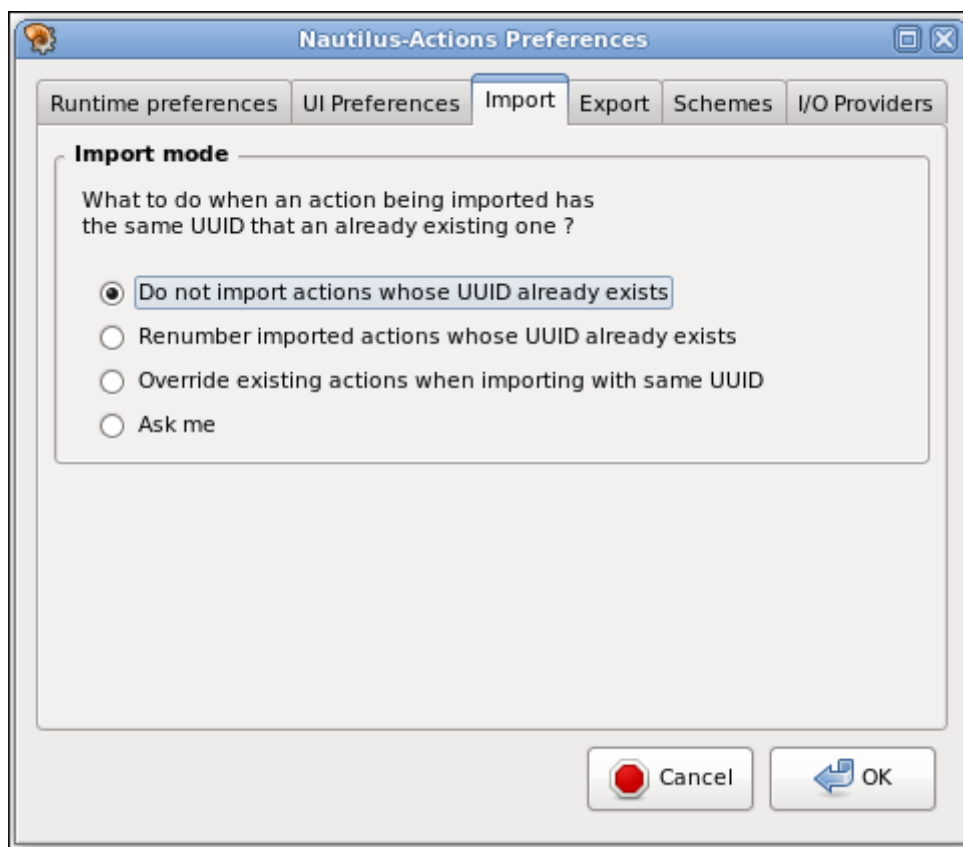
3.11.2. User interface preferences



Preferencias de la IU

Figura 26: Preferencias de la IU

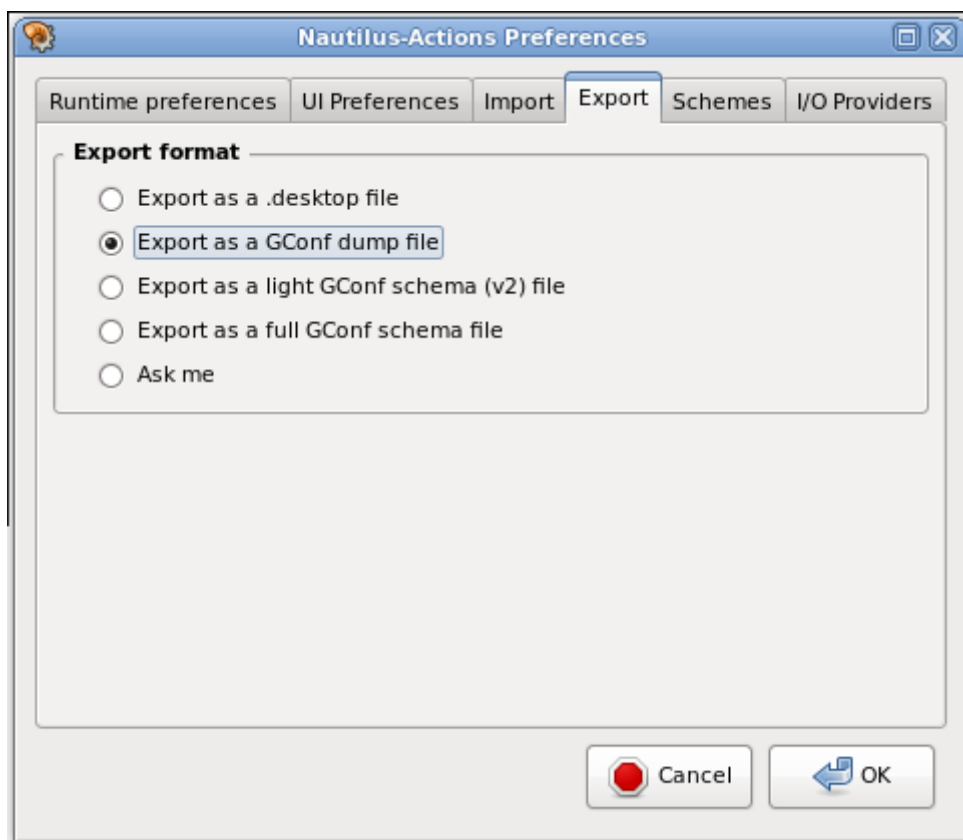
3.11.3. Preferencias de importación



Preferencias de importación

Figura 27: Preferencias de importación

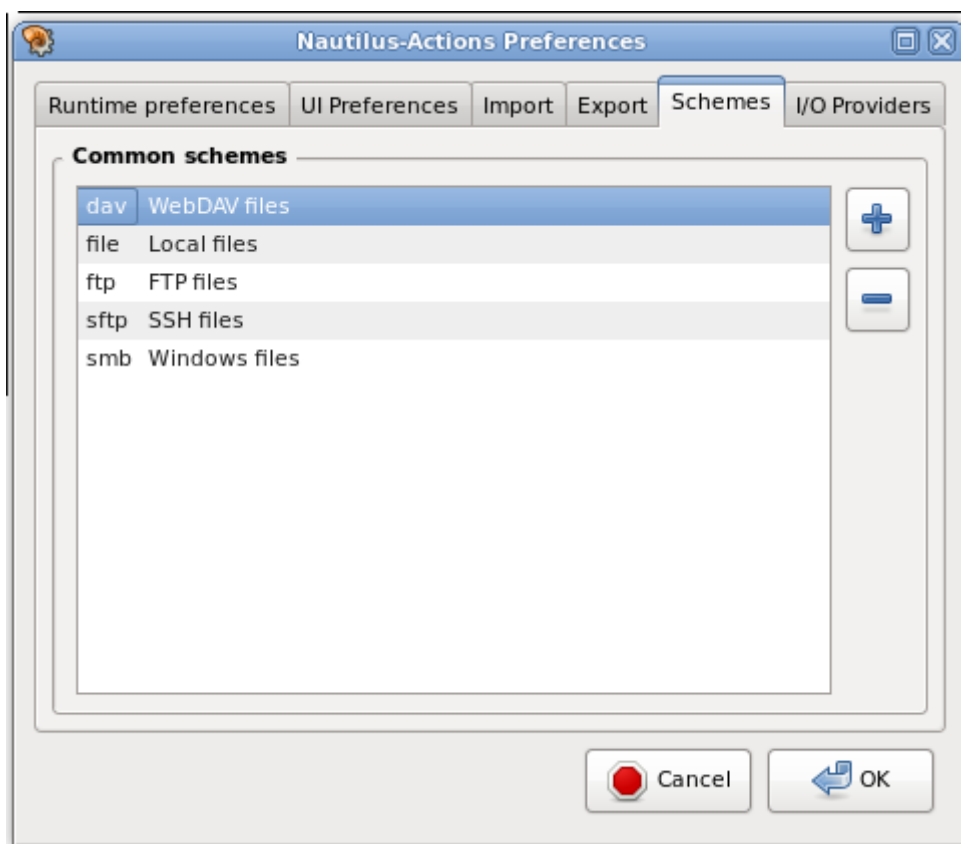
3.11.4. Preferencias de exportación



Preferencias de exportación

Figura 28: Preferencias de exportación

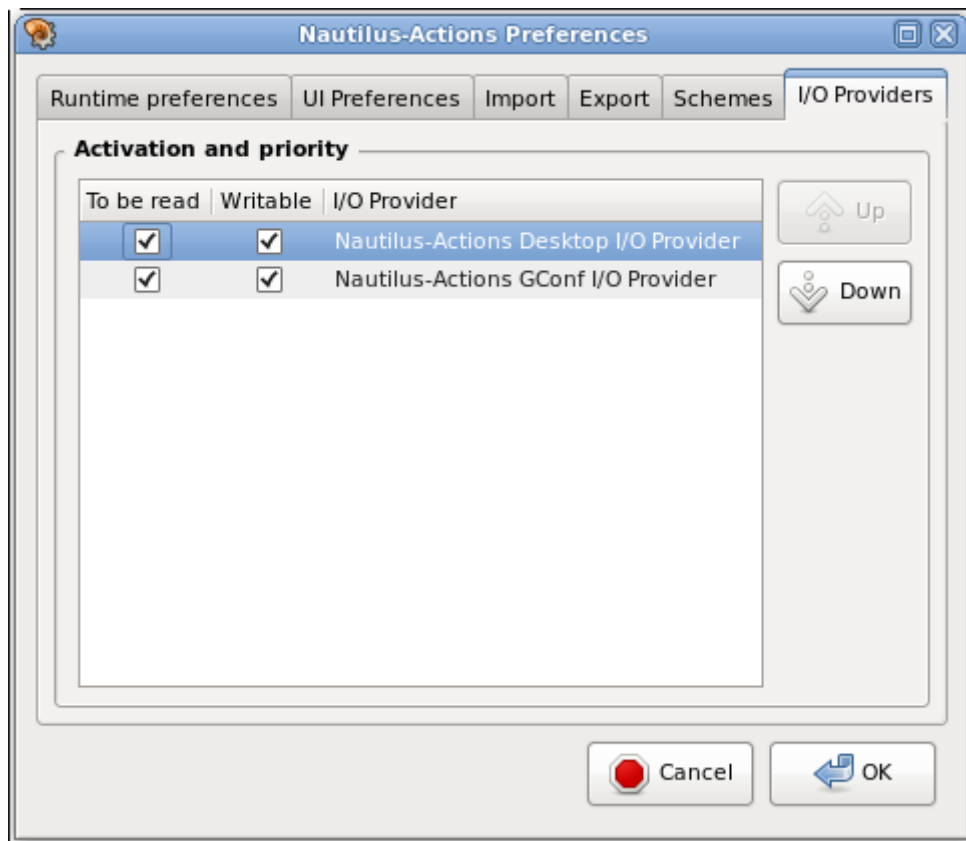
3.11.5. Preferencias de esquemas



Preferencias de esquemas

Figura 29: Preferencias de esquemas

3.11.6. I/O providers preferences



I/O providers preferences

Figura 30: I/O providers preferences

4. Miscellaneous informations

The new action is also displayed in red color in the items list. Red color is used as an indicator that the item is invalid, that is that the item cannot be candidate to be displayed in a Nautilus context menu because some of its informations are missing or erroneous. Here, and though this newly inserted action has some suitable defaults, it lacks a command to be executed to be considered valid by Nautilus-Actions Configuration Tool

5. Errores conocidos y limitaciones

5.1. Errores conocidos

Known bugs are available on [Bugzilla summary page](#).

If you find some new bug in Nautilus-Actions, you are welcome to open it by pointing your favorite browser to [Bugzilla web site](#).

#616532 Directory selection When you're browsing the folder you want to export to in the Nautilus-Actions Configuration Tool's export assistant you can't select it as the directory to export to. Instead you have to go to the directory a level up and select the directory you want to export to there.

5.2. Known limitations

Modo de ejecución As of version 3.0, execution mode may be configured in Nautilus-Actions Configuration Tool but is not yet honored by Nautilus plugin.

This concern working directory, execution mode, startup notification and execution's owner parameters.

Atajo de teclado sugerido As of version 3.0, suggested shortcut, as described in [DES-EMA specification](#) cannot be configured in Nautilus-Actions Configuration Tool, and is not honored by Nautilus plugin.

Separador de menú As of version 3.0, menu separators cannot be configured in Nautilus-Actions Configuration Tool, and are not honored by Nautilus plugin.

One has to note that, for now, Nautilus file manager does not allow its plugins to define separators in the context menu.

6. About Nautilus-Actions Configuration Tool

The first version of Nautilus-Actions was initially written by Frederic Ruauzel (grumz@grumz.net) and Rodrigo Moya (rodrigo@gnome-db.org). It has been thoroughly improved and is currently maintained by Pierre Wieser (pwieser@trychlos.org).

Artwork is due to courtesy of Ulisse Perusin (uli.peru@gmail.com) and DragonArtz (<http://www.dragonartz.net>).

To find more information about Nautilus-Actions, please visit the [Nautilus-Actions website](#).

To report a bug or make a suggestion regarding the Nautilus-Actions, the Nautilus-Actions Configuration Tool or this manual, follow the directions in the [GNOME Feedback Page](#), or you may prefer, at your convenience, directly open a bug or a request for enhancement to [Bugzilla website](#).

A. GNU Free Documentation License

Version 1.3, 3 November 2008

Copyright © 2000, 2001, 2002, 2007, 2008 [Free Software Foundation, Inc.](#)

Se permite la copia y distribución de copias literales de este documento, pero no se permite su modificación.

0. PREÁMBULO

The purpose of this License is to make a manual, textbook, or other functional and useful document “free” in the sense of freedom: to assure everyone the effective freedom to copy and redistribute it, with or without modifying it, either commercially or noncommercially. Secondly, this License preserves for the author and publisher a way to get credit for their work, while not being considered responsible for modifications made by others.

This License is a kind of “copyleft”, which means that derivative works of the document must themselves be free in the same sense. It complements the GNU General Public License, which is a copyleft license designed for free software.

Hemos diseñado esta Licencia para usarla en manuales de software libre, ya que el software libre necesita documentación libre: Un programa libre debe venir con los manuales que ofrezcan la mismas libertades que da el software. Pero esta licencia no se limita a manuales de software; puede ser usada para cualquier trabajo textual, sin tener en cuenta su temática o si se publica como libro impreso. Recomendamos esta licencia principalmente para trabajos cuyo fin sea instructivo o de referencia.

1. APLICABILIDAD Y DEFINICIONES

This License applies to any manual or other work, in any medium, that contains a notice placed by the copyright holder saying it can be distributed under the terms of this License. Such a notice grants a world-wide, royalty-free license, unlimited in duration, to use that work under the conditions stated herein. The “Document”, below, refers to any such manual or work. Any member of the public is a licensee, and is addressed as “you”. You accept the license if you copy, modify or distribute the work in a way requiring permission under copyright law.

A “Modified Version” of the Document means any work containing the Document or a portion of it, either copied verbatim, or with modifications and/or translated into another language.

A “Secondary Section” is a named appendix or a front-matter section of the Document that deals exclusively with the relationship of the publishers or authors of the Document to the Document’s overall subject (or to related matters) and contains nothing that could fall directly within that overall subject. (Thus, if the Document is in part a textbook of mathematics, a Secondary Section may not explain any mathematics.) The relationship could be a matter of historical connection with the subject or with related matters, or of legal, commercial, philosophical, ethical or political position regarding them.

The “Invariant Sections” are certain Secondary Sections whose titles are designated, as being those of Invariant Sections, in the notice that says that the Document is released under this License. If a section does not fit the above definition of Secondary then it is not allowed to be designated as Invariant. The Document may contain zero Invariant Sections. If the Document does not identify any Invariant Sections then there are none.

The “Cover Texts” are certain short passages of text that are listed, as Front-Cover Texts or Back-Cover Texts, in the notice that says that the Document is released under this License. A Front-Cover Text may be at most 5 words, and a Back-Cover Text may be at most 25 words.

A “Transparent” copy of the Document means a machine-readable copy, represented in a format whose specification is available to the general public, that is suitable for revising the document straightforwardly with generic text editors or (for images composed of pixels) generic paint programs or (for drawings) some widely available drawing editor, and that is suitable for input to text formatters or for automatic translation to a variety of formats suitable for input to text formatters. A copy made in an otherwise Transparent file format whose markup, or absence of markup, has been arranged to thwart or discourage subsequent modification by readers is not Transparent. An image format is not Transparent if used for any substantial amount of text. A copy that is not “Transparent” is called “Opaque”.

Examples of suitable formats for Transparent copies include plain ASCII without markup, Texinfo input format, LaTeX input format, SGML or XML using a publicly available DTD, and standard-conforming simple HTML, PostScript or PDF designed for human modification. Examples of transparent image formats include PNG, XCF and JPG. Opaque formats include proprietary formats that can be read and edited only by proprietary word processors, SGML or XML for which the DTD and/or processing tools are not generally available, and the machine-generated HTML, PostScript or PDF produced by some word processors for output purposes only.

The “Title Page” means, for a printed book, the title page itself, plus such following pages as are needed to hold, legibly, the material this License requires to appear in the title page. For works in formats which do not have any title page as such, “Title Page” means the text near the most prominent appearance of the work’s title, preceding the beginning of the body of the text.

The “publisher” means any person or entity that distributes copies of the Document to the public.

A section “Entitled XYZ” means a named subunit of the Document whose title either is precisely XYZ or contains XYZ in parentheses following text that translates XYZ in another language. (Here XYZ stands for a specific section name mentioned below, such as “Acknowledgements”, “Dedications”, “Endorsements”, or “History”.) To “Preserve the Title” of such a section when you modify the Document means that it remains a section “Entitled XYZ” according to this definition.

The Document may include Warranty Disclaimers next to the notice which states that this License applies to the Document. These Warranty Disclaimers are considered to be included by reference in this License, but only as regards disclaiming warranties: any other implication that these Warranty Disclaimers may have is void and has no effect on the meaning of this License.

2. COPIA VERBATIM

You may copy and distribute the Document in any medium, either commercially or noncommercially, provided that this License, the copyright notices, and the license notice saying this License applies to the Document are reproduced in all copies, and that you add no other conditions whatsoever to those of this License. You may not use technical measures to obstruct or control the reading or further copying of the copies you make or distribute. However, you may accept compensation in exchange for copies. If you distribute a large enough number of copies you must also follow the conditions in section 3.

Usted también puede prestar copias, bajo las mismas condiciones establecidas anteriormente, y puede exhibir copias públicamente.

3. COPIAR EN CANTIDAD

If you publish printed copies (or copies in media that commonly have printed covers) of the Document, numbering more than 100, and the Document's license notice requires Cover Texts, you must enclose the copies in covers that carry, clearly and legibly, all these Cover Texts: Front-Cover Texts on the front cover, and Back-Cover Texts on the back cover. Both covers must also clearly and legibly identify you as the publisher of these copies. The front cover must present the full title with all words of the title equally prominent and visible. You may add other material on the covers in addition. Copying with changes limited to the covers, as long as they preserve the title of the Document and satisfy these conditions, can be treated as verbatim copying in other respects.

Si los textos requeridos para la cubierta son muy voluminosos para que ajusten legiblemente, debe colocar los primeros (tantos como sea razonable colocar) en la verdadera cubierta y situar el resto en páginas adyacentes.

If you publish or distribute Opaque copies of the Document numbering more than 100, you must either include a machine-readable Transparent copy along with each Opaque copy, or state in or with each Opaque copy a computer-network location from which the general network-using public has access to download using public-standard network protocols a complete Transparent copy of the Document, free of added material. If you use the latter option, you must take reasonably prudent steps, when you begin distribution of Opaque copies in quantity, to ensure that this Transparent copy will remain thus accessible at the stated location until at least one year after the last time you distribute an Opaque copy (directly or through your agents or retailers) of that edition to the public.

It is requested, but not required, that you contact the authors of the Document well before redistributing any large number of copies, to give them a chance to provide you with an updated version of the Document.

4. MODIFICACIONES

You may copy and distribute a Modified Version of the Document under the conditions of sections 2 and 3 above, provided that you release the Modified Version under precisely this License, with the Modified Version filling the role of the Document, thus licensing distribution and modification of the Modified Version to whoever possesses a copy of it. In addition, you must do these things in the Modified Version:

- A. Use in the Title Page (and on the covers, if any) a title distinct from that of the Document, and from those of previous versions (which should, if there were any, be listed in the History section of the Document). You may use the same title as a previous version if the original publisher of that version gives permission.
- B. List on the Title Page, as authors, one or more persons or entities responsible for authorship of the modifications in the Modified Version, together with at least five of the principal authors of the Document (all of its principal authors, if it has fewer than five), unless they release you from this requirement.
- C. State on the Title page the name of the publisher of the Modified Version, as the publisher.
- D. Preserve all the copyright notices of the Document.
- E. Añadir una nota de copyright apropiada a sus modificaciones, adyacente a las otras notas de copyright.
- F. Include, immediately after the copyright notices, a license notice giving the public permission to use the Modified Version under the terms of this License, in the form shown in the Addendum below.
- G. Preserve in that license notice the full lists of Invariant Sections and required Cover Texts given in the Document's license notice.
- H. Incluir una copia sin modificación de esta Licencia.
- I. Preserve the section Entitled "History", Preserve its Title, and add to it an item stating at least the title, year, new authors, and publisher of the Modified Version as given on the Title Page. If there is no section Entitled "History" in the Document, create one stating the title, year, authors, and publisher of the Document as given on its Title Page, then add an item describing the Modified Version as stated in the previous sentence.
- J. Preserve the network location, if any, given in the Document for public access to a Transparent copy of the Document, and likewise the network locations given in the Document for previous versions it was based on. These may be placed in the "History" section. You may omit a network location for a work that was published at least four years before the Document itself, or if the original publisher of the version it refers to gives permission.

- K. For any section Entitled “Acknowledgements” or “Dedications”, Preserve the Title of the section, and preserve in the section all the substance and tone of each of the contributor acknowledgements and/or dedications given therein.
- L. Preserve all the Invariant Sections of the Document, unaltered in their text and in their titles. Section numbers or the equivalent are not considered part of the section titles.
- M. Delete any section Entitled “Endorsements”. Such a section may not be included in the Modified Version.
- N. Do not retitle any existing section to be Entitled “Endorsements” or to conflict in title with any Invariant Section.
- Ñ. Preserve any Warranty Disclaimers.

If the Modified Version includes new front-matter sections or appendices that qualify as Secondary Sections and contain no material copied from the Document, you may at your option designate some or all of these sections as invariant. To do this, add their titles to the list of Invariant Sections in the Modified Version’s license notice. These titles must be distinct from any other section titles.

You may add a section Entitled “Endorsements”, provided it contains nothing but endorsements of your Modified Version by various parties — for example, statements of peer review or that the text has been approved by an organization as the authoritative definition of a standard.

You may add a passage of up to five words as a Front-Cover Text, and a passage of up to 25 words as a Back-Cover Text, to the end of the list of Cover Texts in the Modified Version. Only one passage of Front-Cover Text and one of Back-Cover Text may be added by (or through arrangements made by) any one entity. If the Document already includes a cover text for the same cover, previously added by you or by arrangement made by the same entity you are acting on behalf of, you may not add another; but you may replace the old one, on explicit permission from the previous publisher that added the old one.

The author(s) and publisher(s) of the Document do not by this License give permission to use their names for publicity for or to assert or imply endorsement of any Modified Version.

5. COMBINAR DE DOCUMENTOS

You may combine the Document with other documents released under this License, under the terms defined in section 4 above for modified versions, provided that you include in the combination all of the Invariant Sections of all of the original documents, unmodified, and list them all as Invariant Sections of your combined work in its license notice, and that you preserve all their Warranty Disclaimers.

The combined work need only contain one copy of this License, and multiple identical Invariant Sections may be replaced with a single copy. If there are multiple Invariant Sections with the same name but different contents, make the title of each such section unique by adding at the end of it, in parentheses, the name of the original author or publisher of that section if known, or else a unique number. Make the same adjustment to the section titles in the list of Invariant Sections in the license notice of the combined work.

In the combination, you must combine any sections Entitled “History” in the various original documents, forming one section Entitled “History”; likewise combine any sections Entitled “Acknowledgements”, and any sections Entitled “Dedications”. You must delete all sections Entitled “Endorsements”.

6. COLECCIONES DE DOCUMENTOS

You may make a collection consisting of the Document and other documents released under this License, and replace the individual copies of this License in the various documents with a single copy that is included in the collection, provided that you follow the rules of this License for verbatim copying of each of the documents in all other respects.

You may extract a single document from such a collection, and distribute it individually under this License, provided you insert a copy of this License into the extracted document, and follow this License in all other respects regarding verbatim copying of that document.

7. AGREGACIONES CON TRABAJOS INDEPENDIENTES

A compilation of the Document or its derivatives with other separate and independent documents or works, in or on a volume of a storage or distribution medium, is called an “aggregate” if the copyright resulting from the compilation is not used to limit the legal rights of the compilation’s users beyond what the individual works permit. When the Document is included in an aggregate, this License does not apply to the other works in the aggregate which are not themselves derivative works of the Document.

If the Cover Text requirement of section 3 is applicable to these copies of the Document, then if the Document is less than one half of the entire aggregate, the Document’s Cover Texts may be placed on covers that bracket the Document within the aggregate, or the electronic equivalent of covers if the Document is in electronic form. Otherwise they must appear on printed covers that bracket the whole aggregate.

8. TRADUCCIÓN

Translation is considered a kind of modification, so you may distribute translations of the Document under the terms of section 4. Replacing Invariant Sections with translations requires special permission from their copyright holders, but you may include translations of some or all Invariant Sections in addition to the original versions of these Invariant Sections. You may include a translation of this License, and all the license notices in the Document, and any Warranty Disclaimers, provided that you also include the original English version of this License and the original versions of those notices and disclaimers. In case of a disagreement between the translation and the original version of this License or a notice or disclaimer, the original version will prevail.

If a section in the Document is Entitled “Acknowledgements”, “Dedications”, or “History”, the requirement (section 4) to Preserve its Title (section 1) will typically require changing the actual title.

9. TERMINACIÓN

You may not copy, modify, sublicense, or distribute the Document except as expressly provided under this License. Any attempt otherwise to copy, modify, sublicense, or distribute it is void, and will automatically terminate your rights under this License.

However, if you cease all violation of this License, then your license from a particular copyright holder is reinstated (a) provisionally, unless and until the copyright holder explicitly and finally terminates your license, and (b) permanently, if the copyright holder fails to notify you of the violation by some reasonable means prior to 60 days after the cessation.

Moreover, your license from a particular copyright holder is reinstated permanently if the copyright holder notifies you of the violation by some reasonable means, this is the first time you have received notice of violation of this License (for any work) from that copyright holder, and you cure the violation prior to 30 days after your receipt of the notice.

Termination of your rights under this section does not terminate the licenses of parties who have received copies or rights from you under this License. If your rights have been terminated and not permanently reinstated, receipt of a copy of some or all of the same material does not give you any rights to use it.

10. REVISIONES FUTURAS DE ESTA LICENCIA

The Free Software Foundation may publish new, revised versions of the GNU Free Documentation License from time to time. Such new versions will be similar in spirit to the present version, but may differ in detail to address new problems or concerns. See [Copyleft](#).

Each version of the License is given a distinguishing version number. If the Document specifies that a particular numbered version of this License “or any later version” applies to it, you have the option of following the terms and conditions either of that specified version or of any later version that has been published (not as a draft) by the Free Software Foundation. If the Document does not specify a version number of this License, you may choose any version ever published (not as a draft) by the Free Software Foundation. If the Document specifies that a proxy can decide which future versions of this License can be used, that proxy’s public statement of acceptance of a version permanently authorizes you to choose that version for the Document.

11. RELICENSING

“Massive Multiauthor Collaboration Site” (or “MMC Site”) means any World Wide Web server that publishes copyrightable works and also provides prominent facilities for anybody to edit those works. A public wiki that anybody can edit is an example of such a server. A “Massive Multiauthor Collaboration” (or “MMC”) contained in the site means any set of copyrightable works thus published on the MMC site.

“CC-BY-SA” means the Creative Commons Attribution-Share Alike 3.0 license published by Creative Commons Corporation, a not-for-profit corporation with a principal place of business in San Francisco, California, as well as future copyleft versions of that license published by that same organization.

“Incorporate” means to publish or republish a Document, in whole or in part, as part of another Document.

An MMC is “eligible for relicensing” if it is licensed under this License, and if all works that were first published under this License somewhere other than this MMC, and subsequently incorporated in whole or in part into the MMC, (1) had no cover texts or invariant sections, and (2) were thus incorporated prior to November 1, 2008.

The operator of an MMC Site may republish an MMC contained in the site under CC-BY-SA on the same site at any time before August 1, 2009, provided the MMC is eligible for relicensing.

ADDENDUM: How to use this License for your documents

Para usar esta licencia en un documento que usted haya escrito, incluya una copia de la Licencia en el documento y ponga el siguiente copyright y notificación de licencia justo después de la página de título:

```
Copyright © YEAR YOUR NAME
```

```
Permission is granted to copy, distribute and/or modify this document under the  
terms of the GNU Free Documentation License, Version 1.3 or any later version  
published by the Free Software Foundation; with no Invariant Sections, no  
Front-Cover Texts, and no Back-Cover Texts. A copy of the license is included in  
the section entitled “GNU Free Documentation License”.
```

If you have Invariant Sections, Front-Cover Texts and Back-Cover Texts, replace the “with... Texts.” line with this:

```
with the Invariant Sections being LIST THEIR TITLES, with the Front-Cover Texts  
being LIST, and with the Back-Cover Texts being LIST.
```

If you have Invariant Sections without Cover Texts, or some other combination of the three, merge those two alternatives to suit the situation.

If your document contains nontrivial examples of program code, we recommend releasing these examples in parallel under your choice of free software license, such as the GNU General Public License, to permit their use in free software.